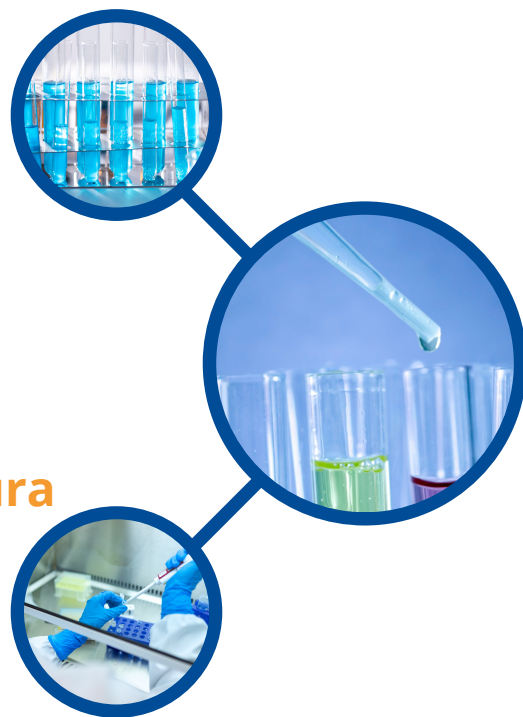


MAXI * TRACK

MaxiLog

Registrador de datos de temperatura
con sensor interno
y pantalla LCD



rango de temperatura:

-35 +50 ° C

Precisión:

+/- 0,2 ° C (de 0 a 10 ° C)

+/- 0,5 ° C en los extremos

Memoria: 8.000 lecturas

Aislamiento: IP-66



MAXI * TRACK

MaxiTrack Sensors

info@maxitracksensors.com | www.maxitracksensors.com



MAXILOG

El modelo MaxiLog es un registrador de datos de temperatura confiable y económico, ideal para el transporte y almacenamiento en aplicaciones cercanas a los segmentos de salud / farmacéutica y también de alimentos. Tiene un elemento sensor interno y puede medir temperaturas de hasta -35 ° C.

Pantalla LCD: vea las temperaturas mínimas y máximas en tiempo real alcanzadas, antes de descargar los datos.

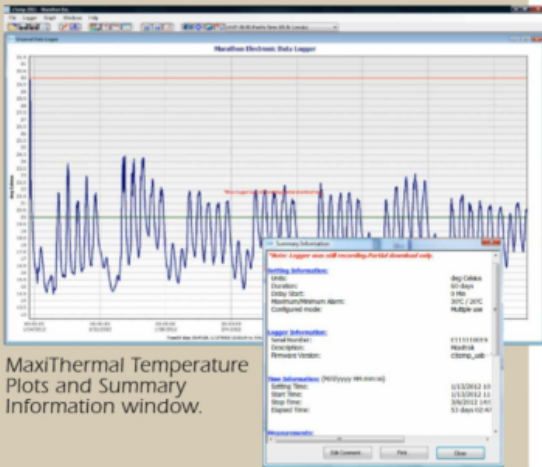
Funciones / Software: El software interno registra los siguientes parámetros: hora, hora de inicio, intervalos de registro, descripción final para instrucciones especiales, valores de alarma, estado de registro, datos de medición, versión del software, número de serie y número de modelo.

Registrador de datos.

Alarmas visuales: todos nuestros registradores de datos se pueden programar con límites de alarma. Si la temperatura alcanza niveles fuera de estos límites, el LDC mostrará un icono de alarma. Para comenzar a grabar, simplemente presione el botón INICIO.

MAXILOG

MaxiThermal Software Highlights: Easy-to-use software provides clear graphs. Report Summary & Statistics File Manager, Note Attachment, Zoom, Elapsed Time or Date/Time View, Recorded View, Celsius or Fahrenheit. Data can be exported to other Windows programs such as spreadsheets, word-processing or databases. Available for Windows XP, Vista, 7, 8 and 10. An Enterprise Software version and 21CFR Part 11 Compliant Software are also available.



MaxiThermal Temperature Plots and Summary Information window.

Serialization:

This recorder is programmed at the factory with a unique serial number for positive tracking.

Water-resistant Enclosure:

The product package is hermetically sealed to an IP66 rating.

Recyclable:

Single-Use MaxiLog units are designed for single use, and we encourage recycling. Please call Marathon Products for complete disposal or recycling instructions.

Minimum Order Quantity:

Single-Use MaxiLog units are sold in minimum lot quantities of 25 units. Your order is shipped on the same day if the order is placed before 2 p.m. PST.

Options:

- MaxiThermal software
- USB cradle

USB Interface: To download recorded information, simply plug the USB Cradle into the standard USB port of your PC.

Computer Ready: MaxiThermal software is used to read the logger. It runs on Windows XP, Vista, 7, 8 and 10. The MaxiThermal software and USB Cradle are available as separate accessory items.

MaxiLog Specifications SKU #7026

- Memory:** EEPROM, 8k Storage (approx. 8,000 data points)
- Temperature Range:** -35°C to +50°C (-31°F to +122°F)
- Temperature Accuracy:** ±0.2°C at 0° to 10°C, ±1.0°C at extremes (±0.36°F at 32° to 50° F, ±1.8°F at extremes)
- Measurement Intervals:** Pre-programmed from 2 seconds to months depending on model type (duration).
- Temperature Sensor:** NIST-traceable Precision SMT Thermistor
- Indicators:** LCD Display, Start/Stop and Alarm
- High and low alarm limits:** Alarm set by temperature and time
- Computer Interface:** USB Cradle
- Internal Software Provides:** Times, Start time, Interval, User description, Alarm values, Recording status, Measurement data, Software version, Serial number, Model type.
- Power Source:** Lithium Battery (2 year operating, 3 year shelf life)
- Size:**

	Length	Width	Depth
	5.5 cm (2.2 in.)	2.7 cm (1.0 in.)	1.4 cm (0.55 in.)
- Weight:** 19 g (.67 oz.)