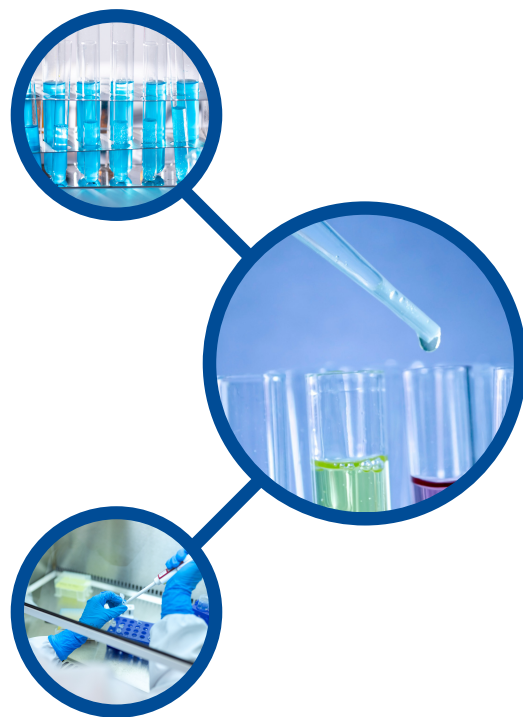


MAXI \* TRACK

# MaxiLog

Temperature Data Logger  
with internal sensor  
and LCD Display



**Temperature range:**

-35 +50 ° C

**Precision:**

+/- 0.2 ° C (from 0 to 10 ° C)

+/- 0.5 ° C at the ends

**Memory:** 8,000 readings

**Insulation:** IP-66



MAXI \* TRACK

MaxiTrack Sensors

info@maxitracksensors.com | www.maxitracksensors.com



# MAXILOG

The MaxiLog model is a reliable and economical Temperature Data Logger, ideal for transportation and storage in applications close to the Health / Pharmaceutical and also food segments. It has an internal sensor element and can measure temperatures down to -35 ° C.

**LCD display:** View the temperatures in real time and Min and Max reached, before downloading the data.

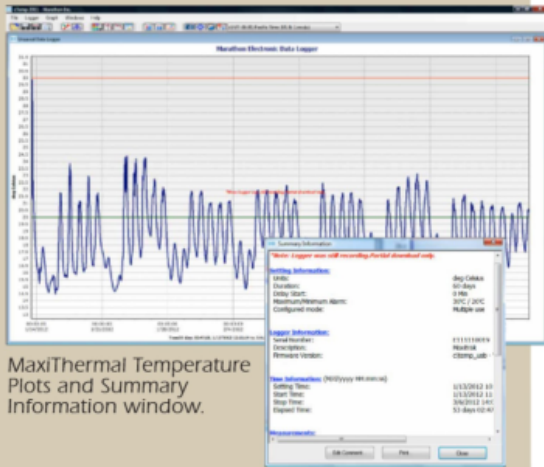
## **Features / Software:**

The internal software records the following parameters: time, start time, recording intervals, final description for special instructions, alarm values, recording status, measurement data, software version, serial number and model number  
Data Logger.

**Visual alarms:** All of our data loggers can be programmed with alarm limits. If the temperature reaches levels outside these limits, the LDC will display an alarm icon. To start recording, just press the START button!

# MAXILOG

**MaxiThermal Software Highlights:** Easy-to-use software provides clear graphs. Report Summary & Statistics File Manager, Note Attachment, Zoom, Elapsed Time or Date/Time View, Recorded View, Celsius or Fahrenheit. Data can be exported to other Windows programs such as spreadsheets, word-processing or databases. Available for Windows XP, Vista, 7, 8 and 10. An Enterprise Software version and 21CFR Part 11 Compliant Software are also available.



MaxiThermal Temperature Plots and Summary Information window.

**Serialization:**

This recorder is programmed at the factory with a unique serial number for positive tracking.

**Water-resistant Enclosure:**

The product package is hermetically sealed to an IP66 rating.

**Recyclable:**

Single-Use MaxiLog units are designed for single use, and we encourage recycling. Please call Marathon Products for complete disposal or recycling instructions.

**Minimum Order Quantity:**

Single-Use MaxiLog units are sold in minimum lot quantities of 25 units. Your order is shipped on the same day if the order is placed before 2 p.m. PST.

**Options:**

- MaxiThermal software
- USB cradle

**USB Interface:** To download recorded information, simply plug the USB Cradle into the standard USB port of your PC.

**Computer Ready:** MaxiThermal software is used to read the logger. It runs on Windows XP, Vista, 7, 8 and 10. The MaxiThermal software and USB Cradle are available as separate accessory items.

**MaxiLog Specifications** SKU #7026

- Memory:** EEPROM, 8k Storage (approx. 8,000 data points)
- Temperature Range:** -35°C to +50°C (-31°F to +122°F)
- Temperature Accuracy:** ±0.2°C at 0° to 10°C, ±1.0°C at extremes (±0.36°F at 32° to 50° F, ±1.8°F at extremes)
- Measurement Intervals:** Pre-programmed from 2 seconds to months depending on model type (duration).
- Temperature Sensor:** NIST-traceable Precision SMT Thermistor
- Indicators:** LCD Display, Start/Stop and Alarm
- High and low alarm limits:** Alarm set by temperature and time
- Computer Interface:** USB Cradle
- Internal Software Provides:** Times, Start time, Interval, User description, Alarm values, Recording status, Measurement data, Software version, Serial number, Model type.
- Power Source:** Lithium Battery (2 year operating, 3 year shelf life)
- Size:**

	Length	Width	Depth
	5.5 cm (2.2 in.)	2.7 cm (1.0 in.)	1.4 cm (0.55 in.)
- Weight:** 19 g (.67 oz.)