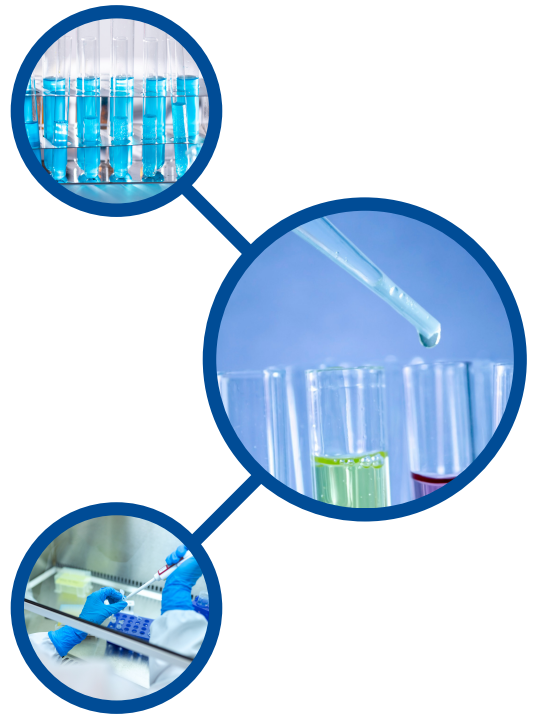


MAXI * TRACK

MaxiLog-Min/Max

Temperature Data Logger with External Probe and LCD Display



Temperature range:

-35 +85 ° C

Precision:

+/- 0.3 ° C (from 0 to 10 ° C)

+/- 0.5 ° C at the ends

Memory: 8,000 readings

Insulation: IP-66

MAXI * TRACK

MaxiTrack Sensors

info@maxitracksensors.com. | www.maxitracksensors.com

MAXILOG-MIN/MAX

The MaxiLog-Min / Max model is a reliable and economical Temperature Data Logger, ideal for transportation and storage in applications close to the Health / Pharmaceutical and also food segments. It has an external probe attached to 2 meters in length and can measure temperatures down to -35 ° C.

LCD display: View the real-time and Min and Max temperatures reached, before downloading the data.

Hold function: To freeze the temperature of the display momentarily, just press the START button. To reset, simply press one more time to reset and return to the current temperature value.

Visual Alarms: All of our data loggers can be programmed with alarm limits. If the temperature reaches levels outside these limits, the LDC will display an alarm icon. To start recording, just press the START button!

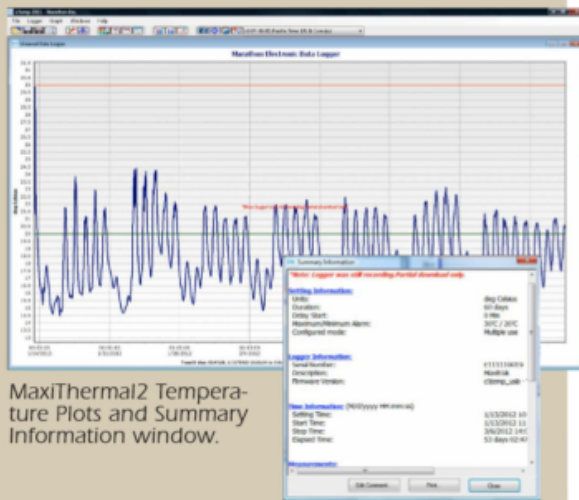
USB interface: To download the recorded information, simply connect the USB interface to the standard USB port on your PC or Notebook.



Reading Cradle / USB Interface

MAXILOG-MIN/MAX

MaxiThermal2 Software Highlights: Easy-to-use software provides clear graphs. Report Summary & Statistics File Manager, Note Attachment, Zoom, Elapsed Time or Date/Time View, Recorded View, Celsius or Fahrenheit. Data can be exported to other Windows programs such as spreadsheets, word-processing or databases. Available for Windows 7, 8 and 10. An Enterprise Software version and 21CFR Part 11 Compliant Software are also available.



MaxiThermal2 Temperature Plots and Summary Information window.

Min-Max Plus Specifications SKU#7047

- Memory EEPROM, Storage: 8K (approx. 8,000 measurements)
- Temperature Range: -35°C to 85°C / -31°F to 185°F
- Temperature Accuracy: $\pm 0.3^{\circ}\text{C}$ at 0°C to 10°C / $\pm 1^{\circ}\text{C}$ at extremes
 $\pm 0.54^{\circ}\text{F}$ at 32°F to 50°F / $\pm 1.8^{\circ}\text{F}$ at extremes
- Measurement intervals: User programmable from 2 seconds to months
- Multi-use Temperature sensor: NTC probe with wired glass thermistor, SST tube dia 3mm 2cm long-IP67
- Probe: Silicone cable dia 2.0mm (0.08 in), 2.0 meter (6.56 feet) long
- Indicators: Start/Stop and Alarm
- High and low alarm limits: LCD display, ALARM set by temperature and time
- Computer interface: USB Standard Plug A to Mini B cable and Reader Station
- Internal firmware provides: Times, Start time, Interval, User description, Alarm values, Recording status, Measurement data, Firmware version, Serial number, Model type
- Power source: Lithium battery (1 year operating, 3 years shelf life)
- Size:

Length	Width	Depth
5.5 cm/2.2in.	2.7 cm/1.06 in.	1.4 cm/0.55 in.
- Weight: 32 g / 1.13 oz with probe
- Required Accessories: MaxiThermal2 software
Maxilog MaxiThermal2 Reader Station