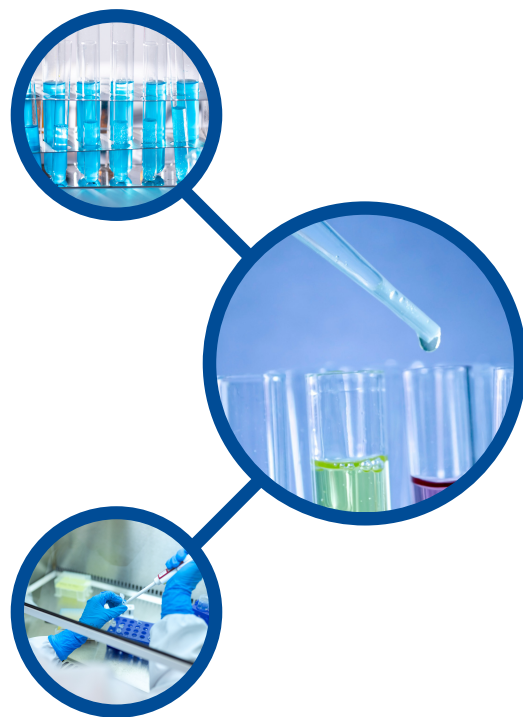


MAXI \* TRACK

# MaxiLog-Min/Max

Data Logger de Temperatura com Sonda Externa e Display LCD



**Faixa de temperatura:**

-35 +85 °C

**Precisão:**

+/- 0,3 °C (de 0 a 10 °C)

+/- 0,5 °C nos extremos

**Memória:** 8.000 leituras

**Isolamento:** IP-66

MAXI \* TRACK

MaxiTrack Sensors

info@maxitracksensors.com | www.maxitracksensors.com

# MAXILOG-MIN/MAX

O modelo MaxiLog-Min/Max é um Data Logger de Temperatura confiável e econômico, ideal para transporte e armazenagem em aplicações junto aos segmentos de Saúde/Farmacêutico e também alimentício. Possui uma sonda externa acoplada de 2 metros de comprimento e pode medir temperaturas até  $-35\text{ }^{\circ}\text{C}$ .

**Display LCD:** Visualize as temperaturas em tempo real e Min e Max atingidas, antes de fazer o download dos dados.

**Função Hold:** Para congelar o valor de temperatura do display momentaneamente, basta pressionar o botão START. Para reiniciar, simplesmente pressione mais uma vez para reiniciar e retornar ao valor de temperatura atual.

**Alarmes Visuais:** Todos os nossos registradores de dados podem ser programados com limites de alarme. Se a temperatura atingir níveis fora desses limites, o LDC exibirá um ícone de alarme. Para iniciar as gravações, basta pressionar o botão START!

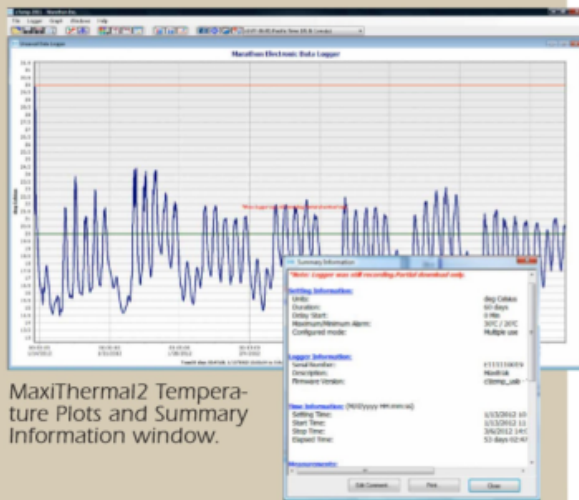
**Interface USB:** Para baixar as informações gravadas, basta conectar a interface USB à porta USB padrão do seu PC ou Notebook.



Base de Leitura / Interface USB

# MAXILOG-MIN/MAX

**MaxiThermal2 Software Highlights:** Easy-to-use software provides clear graphs. Report Summary & Statistics File Manager, Note Attachment, Zoom, Elapsed Time or Date/Time View, Recorded View, Celsius or Fahrenheit. Data can be exported to other Windows programs such as spreadsheets, word-processing or databases. Available for Windows 7, 8 and 10. An Enterprise Software version and 21CFR Part 11 Compliant Software are also available.



MaxiThermal2 Temperature Plots and Summary Information window.

## Min-Max Plus Specifications SKU#7047

- Memory EEPROM, Storage: 8K (approx. 8,000 measurements)
- Temperature Range: -35°C to 85°C / -31°F to 185°F
- Temperature Accuracy:  $\pm 0.3^{\circ}\text{C}$  at  $0^{\circ}\text{C}$  to  $10^{\circ}\text{C}$  /  $\pm 1^{\circ}\text{C}$  at extremes  
 $\pm 0.54^{\circ}\text{F}$  at  $32^{\circ}\text{F}$  to  $50^{\circ}\text{F}$  /  $\pm 1.8^{\circ}\text{F}$  at extremes
- Measurement intervals: User programmable from 2 seconds to months
- Multi-use Temperature sensor: NTC probe with wired glass thermistor, SST tube dia 3mm 2cm long-IP67
- Probe: Silicone cable dia 2.0mm (0.08 in), 2.0 meter ( 6.56 feet) long
- Indicators: Start/Stop and Alarm
- High and low alarm limits: LCD display, ALARM set by temperature and time
- Computer interface: USB Standard Plug A to Mini B cable and Reader Station
- Internal firmware provides: Times, Start time, Interval, User description, Alarm values, Recording status, Measurement data, Firmware version, Serial number, Model type
- Power source: Lithium battery ( 1 year operating, 3 years shelf life )
- Size:
 

Length	Width	Depth
5.5 cm/2.2in.	2.7 cm/1.06 in.	1.4 cm/0.55 in.
- Weight: 32 g / 1.13 oz with probe
- Required Accessories: MaxiThermal2 software  
Maxilog MaxiThermal2 Reader Station