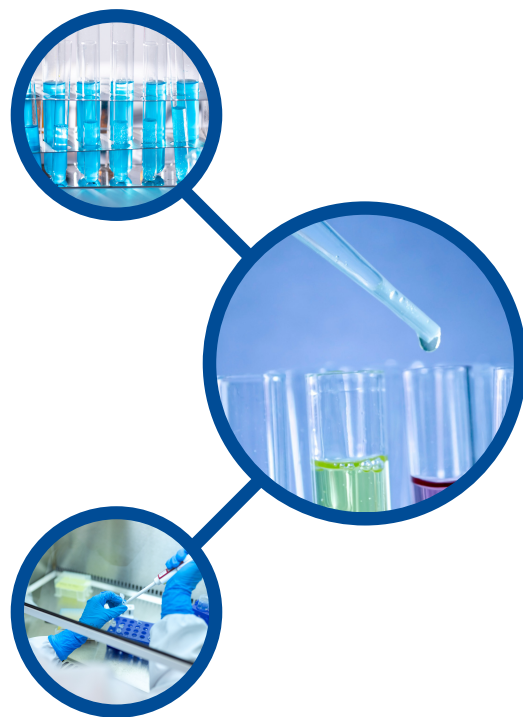


MAXI \* TRACK

# MaxiLog

Data Logger de Temperatura  
com sensor interno  
e Display LCD



**faixa de temperatura:**

-35 +50 °C

**Precisão:**

+/- 0,2 °C (de 0 a 10 °C)

+/- 0,5 °C nos extremos

**Memória:** 8.000 leituras

**Isolamento:** IP-66



MAXI \* TRACK

MaxiTrack Sensors

info@maxitracksensors.com | www.maxitracksensors.com



# MAXILOG

O modelo MaxiLog é um Data Logger de Temperatura confiável e econômico, ideal para transporte e armazenagem em aplicações junto aos segmentos de Saúde/Farmacêutico e também alimentício. Possui elemento sensor interno e pode medir temperaturas até -35 °C.

**Display LCD:** Visualize as temperaturas em tempo real e Min e Max atingidas, antes de fazer o download dos dados.

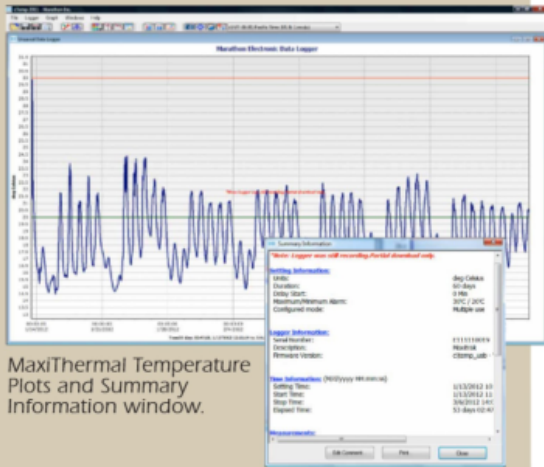
## **Recursos / Software:**

O software interno registra os seguintes parâmetros: tempo, hora de início, intervalos de gravação, descrição final para instruções especiais, valores de alarme, status de gravação, dados de medição, versão do software, número de série e modelo do Data Logger.

**Alarmes visuais:** Todos os nossos registradores de dados podem ser programados com limites de alarme. Se a temperatura atingir níveis fora desses limites, o LDC exibirá um ícone de alarme. Para iniciar as gravações, basta pressionar o botão START!

# MAXILOG

**MaxiThermal Software Highlights:** Easy-to-use software provides clear graphs. Report Summary & Statistics File Manager, Note Attachment, Zoom, Elapsed Time or Date/Time View, Recorded View, Celsius or Fahrenheit. Data can be exported to other Windows programs such as spreadsheets, word-processing or databases. Available for Windows XP, Vista, 7, 8 and 10. An Enterprise Software version and 21CFR Part 11 Compliant Software are also available.



MaxiThermal Temperature Plots and Summary Information window.

**Serialization:**

This recorder is programmed at the factory with a unique serial number for positive tracking.

**Water-resistant Enclosure:**

The product package is hermetically sealed to an IP66 rating.

**Recyclable:**

Single-Use MaxiLog units are designed for single use, and we encourage recycling. Please call Marathon Products for complete disposal or recycling instructions.

**Minimum Order Quantity:**

Single-Use MaxiLog units are sold in minimum lot quantities of 25 units. Your order is shipped on the same day if the order is placed before 2 p.m. PST.

**Options:**

- MaxiThermal software
- USB cradle

**USB Interface:** To download recorded information, simply plug the USB Cradle into the standard USB port of your PC.

**Computer Ready:** MaxiThermal software is used to read the logger. It runs on Windows XP, Vista, 7, 8 and 10. The MaxiThermal software and USB Cradle are available as separate accessory items.

## MaxiLog Specifications SKU #7026

Memory:	EEPROM, 8k Storage (approx. 8,000 data points)		
Temperature Range:	-35°C to +50°C (-31°F to +122°F)		
Temperature Accuracy:	±0.2°C at 0° to 10°C, ±1.0°C at extremes (±0.36°F at 32° to 50° F, ±1.8°F at extremes)		
Measurement Intervals:	Pre-programmed from 2 seconds to months depending on model type (duration).		
Temperature Sensor:	NIST-traceable Precision SMT Thermistor		
Indicators:	LCD Display, Start/Stop and Alarm		
High and low alarm limits:	Alarm set by temperature and time		
Computer Interface:	USB Cradle		
Internal Software Provides:	Times, Start time, Interval, User description, Alarm values, Recording status, Measurement data, Software version, Serial number, Model type.		
Power Source:	Lithium Battery (2 year operating, 3 year shelf life)		
Size:	Length	Width	Depth
	5.5 cm (2.2 in.)	2.7 cm (1.0 in.)	1.4 cm (0.55 in.)
Weight:	19 g (.67 oz.)		