

# USER'S GUIDE

# POD LINE

App Mobile | PODs | Nuvem | PC Tool  
2020



**MAXI TRACK**

MaxiTrack Sensors

[info@maxitracksensors.com](mailto:info@maxitracksensors.com) | [www.maxitracksensors.com](http://www.maxitracksensors.com)

# SUMMARY

## Starting

How to download the Verigo App.....	3
Creating an account.....	4
Sign-in.....	6
Guest viewing.....	6
Recovering lost account data.....	7

## **USING THE APPLICATION.....9**

Nearby: Home Screen.....	9
Overview.....	10
Alert levels.....	11
Selecting a Pod.....	12
Status.....	13
Graphic.....	15
Analysis tab.....	17
Settings.....	18

## **ACTIVATING A POD.....19**

Session name.....	22
Recording details.....	23
Alert settings.....	24
Advanced Settings.....	25
Selecting your Pod.....	27
Confirm settings.....	27

## **STOP RECORDING.....28**

Stop the Pod.....	28
Sharing session data.....	30

## **USER SETTINGS.....31**

Automatic synchronization.....	32
Saving Settings.....	32
Automatic mode.....	33



Automatic start .....	34
Automatic synchronization.....	36
Automatic interruption .....	37
<b>VERIGO'S CLOUD.....</b>	<b>38</b>
Search page .....	38
Accessing the Pod data .....	40
Sensor history .....	41
Event history .....	44
Administrator.....	45
Customizable product life profiles .....	46
Settings.....	47
<b>PC TOOL.....</b>	<b>48</b>
System Requirements .....	48
Installation.....	49
Prerequisites / First recording .....	51
<b>CONFIGURING THE DEVICE.....</b>	<b>52</b>
Login.....	52
Primary settings .....	55
Advanced Settings.....	56
Scanning nearby Pods .....	57
Exporting recordings .....	59
<b>SYNCHRONIZATION AND INTERRUPTION.....</b>	<b>60</b>
Scan mode .....	60
Scan range .....	61
Interrupt options .....	62
Scanning nearby Pods .....	63



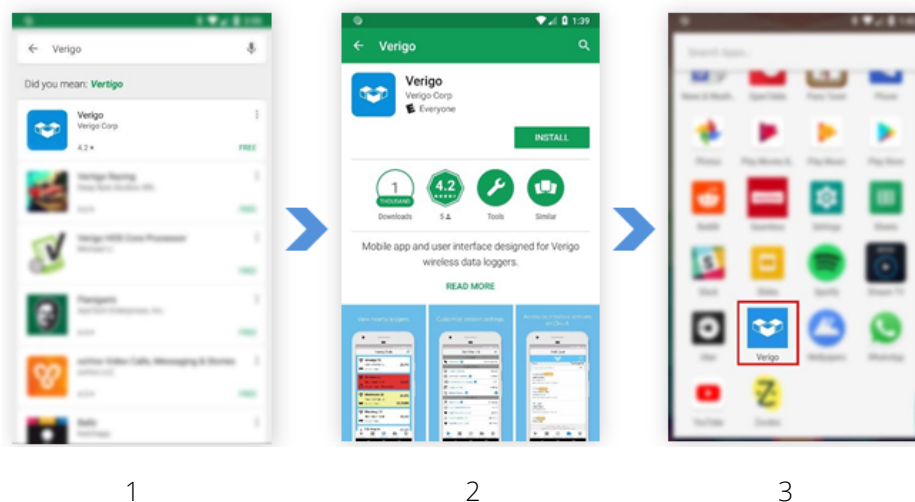
**STARTING**

# HOW TO DOWNLOAD THE VERIGO APP

To interact and view recorded data from your Pod, you will need to download the free Verigo app from the Apple App Store® for iOS™ or Google Play Store™ for Android™.

You can also visit the Verigo website on your mobile device to get a direct link to the app on the App Store or Google Play Store.

1. Navigate to the Apple App Store or Google Play Store on your mobile device
2. In the search bar, type "Verigo". Download and Install the Application.
3. Open the application



1

2

3

## STARTING

# CREATING AN ACCOUNT

Before registering an account, make sure your company is already registered and contact your administrator to create an account at the company.

Otherwise, select the option to register a new company and follow the steps below.

There are two ways to create an account:

- Through the app on your device
- Visiting the Verigo Cloud website (cloud.verigo.io)

Return to app Sign Up

Please provide the following information to create your account. All fields are required.

first name

last name

e-mail

username

password

confirm password

your company

REGISTER

Already registered? Return to login.

Verigo

Please provide the following information to create your account. All fields are required.

first name

last name

e-mail

username

password

confirm password

your company

REGISTER

Already registered? Return to login.

To register a new corporate account with Verigo using the mobile app, fill in all necessary information in the text boxes:

- First name
- Last name
- E-mail address for validating and retrieving account information
- Username to log in to the Verigo mobile and cloud app
- Password to log in to the Verigo mobile and cloud app. The password must be at least eight (8) characters long and contain at least one uppercase letter, one lowercase letter and a number.
- Password confirmation
- The name of the company that is registering

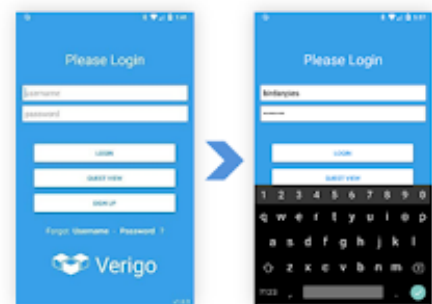
## STARTING

# SIGN-IN & GUEST VIEWING

### SIGN-IN

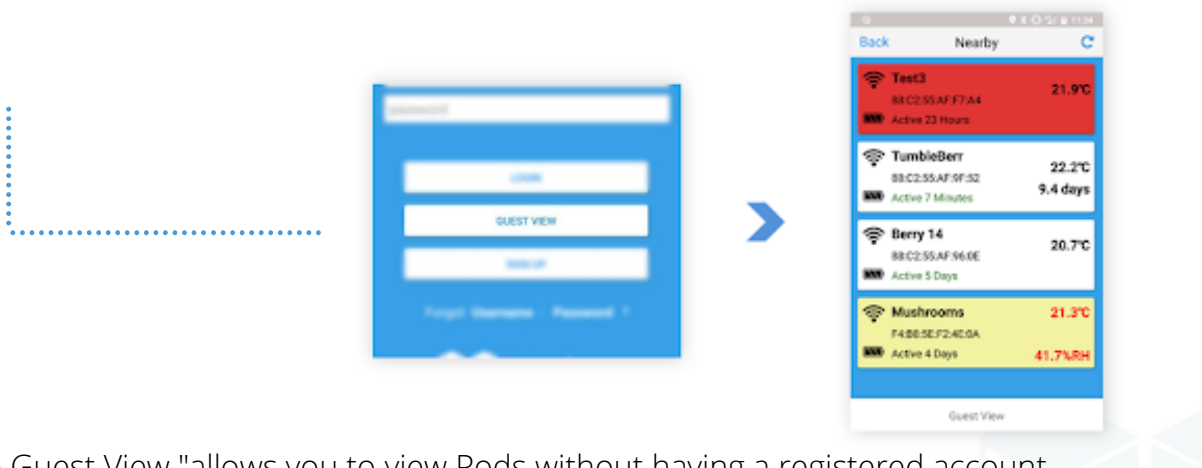
To interact and manage nearby Pods, simply enter your account credentials.

- Enter your username in the first text box that reads "Username".
- Enter your password in the second text box where it says "Password".
- After entering your information, tap the Login button.



### Guest viewing

You do not need an account to view nearby Pods. If you simply want to see the current reading, just select the "Guest View" option on the login screen.



"The Guest View "allows you to view Pods without having a registered account.

However, you will not be able to start, stop and view the entire data session of your Pods in this mode.

Press **"GUEST VIEW"** on the login screen to see the Pods nearby.

**STARTING**

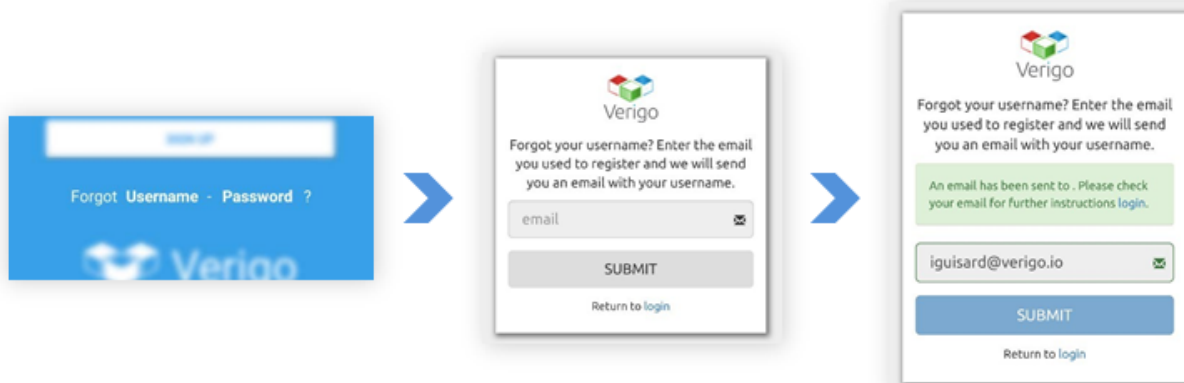
# RECOVERING LOST ACCOUNT DATA

If you don't remember your username or password, there are two ways to recover and reset your account credentials. You can do this through the mobile app or visit the Verigo Cloud home page on the web.

Follow these steps if you are trying to recover from the application:

1. Touch SIGN UP on the home screen;
2. Touch LOGIN at the bottom of the page;
3. Choose what information you want to retrieve.  
The. Tap the "Forgot Password?" if you are trying to reset your password;  
B. Tap the "Forgot Username?" if you are trying to retrieve your username.
4. Enter the email address you used to register your account and tap the SUBMIT button.
5. After sending, you will receive an email with further instructions.
6. If you are using an Internet browser to retrieve your account credentials, visit: [cloud.verigo.io](http://cloud.verigo.io) (skip steps 1 and 2)





Choose "Username" or "Password" Enter the email address associated with your account.

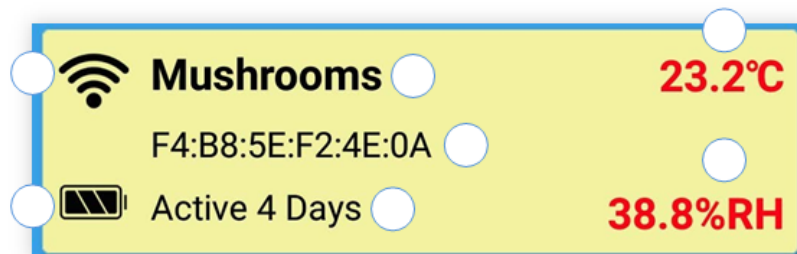
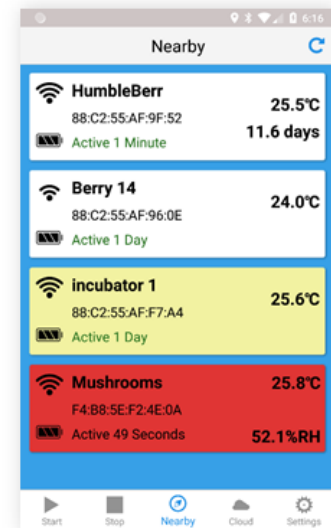
Check the origin via email.

## USING THE APPLICATION

# NEARBY: HOME SCREEN

After entering your credentials and logging into your account, you will be taken to the Nearby Pods tab, the home screen. This screen shows all active Pods currently close to you within a range of approximately 40 meters \*.

This screen shows the most basic and essential information.



## USING THE APPLICATION

# OVERVIEW

Each individual line is a Pod that is currently active near you.

The information displayed is as follows:

- Wireless Pod Signal Strength
- Battery indicator
- Current Pod Name
- Unique unit identification number (MAC address)
- Pod time indicator active for the current session
- Real-time temperature (30-second updates)
- Real-time humidity (available on Pod RH models only)
- Remaining product life data in real time (only available on Quality Pod models)

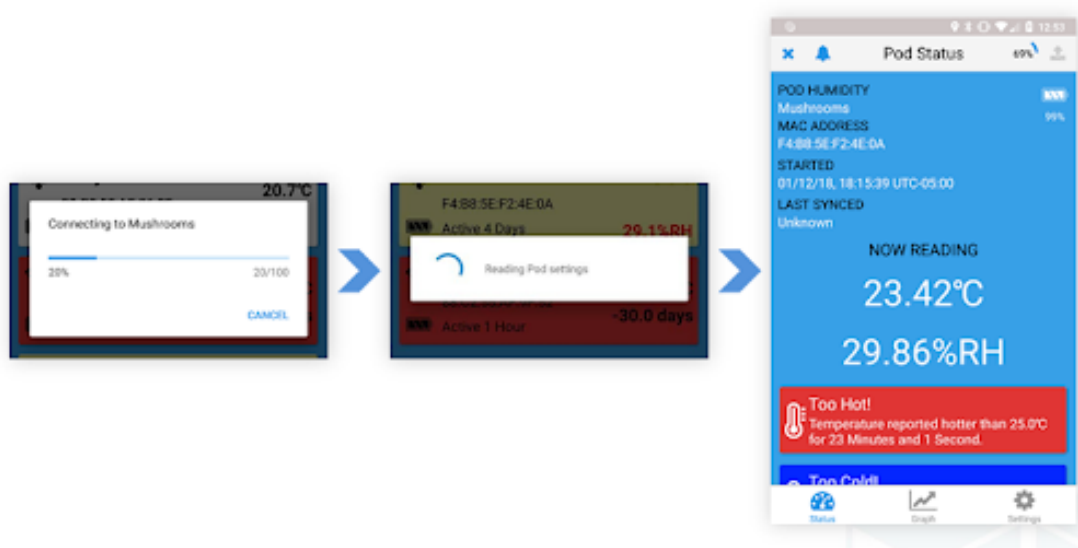
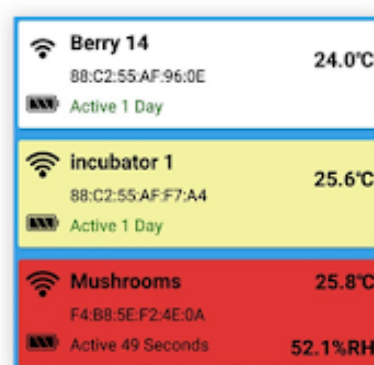
## USING THE APPLICATION

# ALERT LEVELS

Sometimes the background of the lines on the home screen changes color due to an alert.

There are three alert levels that are shown on the Nearby screen:

- **White** indicates that there are no alerts.
- **Yellow** indicates that the button was recently pressed.
- **Red** indicates that the Pod has an alert based on the threshold.



## USING THE APPLICATION

# SELECTING A POD

If you want to select a Pod to view your current recorded data, just tap on the line of your choice. When selecting a Pod, the Verigo app will establish a connection if it is within range.

## USING THE APPLICATION

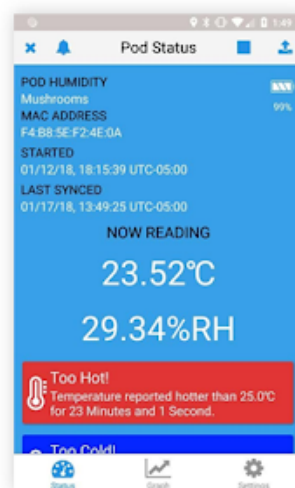
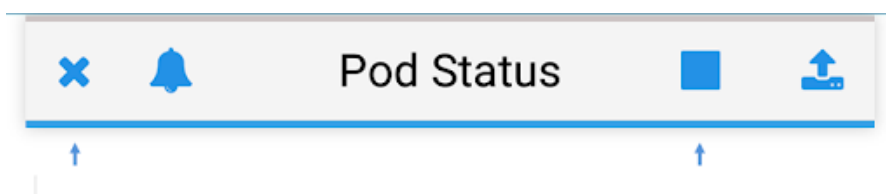
# STATUS

The Pod Status screen displays essential information about your Pod. Starting at the top of the user interface, there are three main features that allow:

- **Ring** the Pod can be located with an audible warning
- **Stop** the Pod ends the current session and synchronizes the data to the system.
- **Share** Pod data in CSV, PDF or a link via email and other social networks can be shared
- Ao connect to a Pod, the Verigo app automatically retrieves all stored data. On the Pod Status screen, the following information is displayed:
  - Pod model
  - Pod Name
  - MAC Address
  - Battery level
  - Start time date
  - Last synchronization with the cloud.
  - Measurements of temperature, humidity and product life in real time (product life available on PH0 model only).
  - Alarm condition reports.

## USING THE APPLICATION

# STATUS



## USING THE APPLICATION

# POD GRAPH & KEY RESOURCES

### POD GRAPH

To view a graph of recorded data from your Pod, select the **botão Graph** after establishing a connection with a Pod. This feature allows you to interact with your data. The first graph shows the temperature recorded during the entire monitoring session. Se disponível, o segundo gráfico mostra a umidade relativa à qual seu Pod foi exposto por sua duração ou a vida útil restante do produto, dependendo do Pod que você está usando.

### POD GRAPH: KEY FEATURES

The plotted graph is fully interactive. To view a specific part of the graph, you can zoom in and out by pinching or expanding your fingers out in a similar way to displaying photos or maps in other applications.

If you want to view a specific point on the graph, tap and hold the part of the graph for a second to trace the recorded data. This will display the date of your recording, the time and the exact value of the data for that point (relative humidity is only available on the PA0 model).

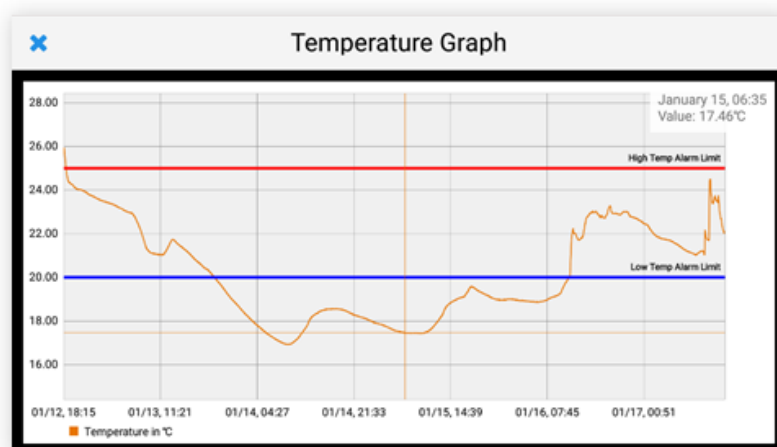
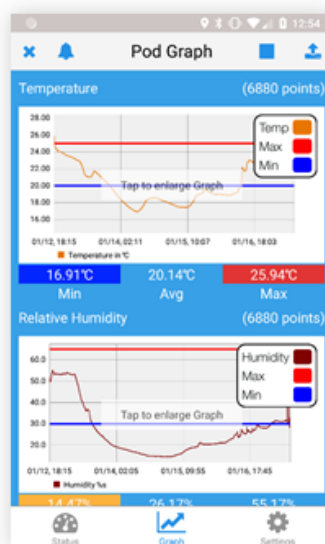
For mobile devices with small screens, there's a unique feature to help you easily analyze data. Simply touch the graph with your finger to view the recorded data in full screen. This action will rotate and lock the plotted graph in an upright position for greater resolution of the data.





## USING THE APPLICATION

# POD GRAPH & KEY RESOURCES



## USING THE APPLICATION

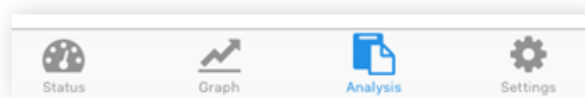
# ANALYSIS TAB

The analysis tab is only available for the iOS version.

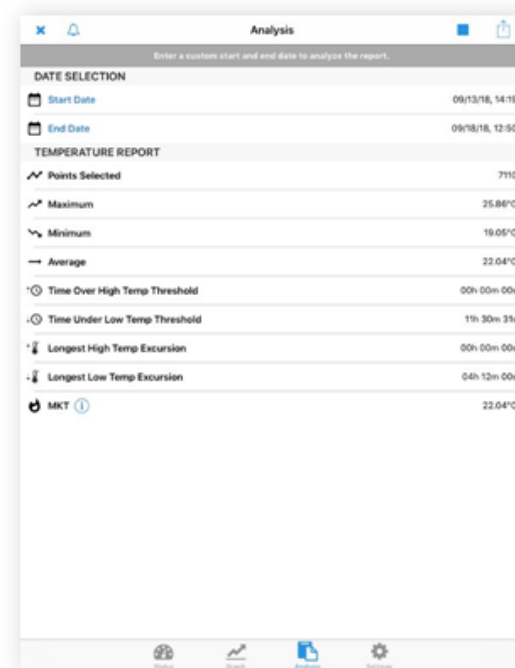
By default, the start and end dates are the dates of the first and last recorded data points, respectively. You can choose a different start and end date to analyze different time frames in your session.

A temperature and humidity report (if applicable) will be automatically generated with start and end dates.

It will appear:



- Total number of points selected
- Maximum, minimum and average readings
- Time above and below the limits
- Longer high and low tour
- MKT, or average kinetic temperature

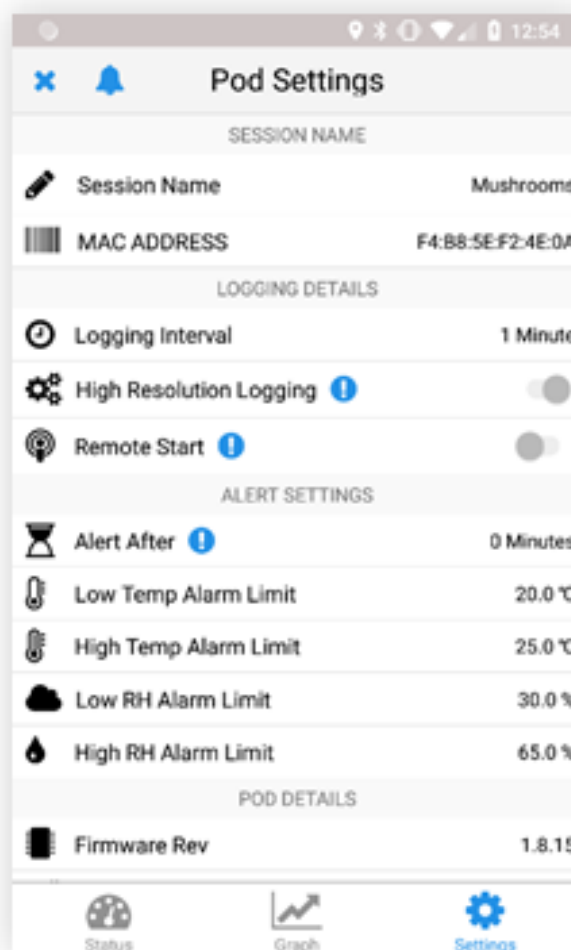


## USING THE APPLICATION

# SETTINGS

You can also view the settings currently programmed for this data logging session by tapping the button **Settings**.

These settings cannot be changed while the Pod is active.



## ACTIVATING A POD

# STARTING THE POD

The Start tab is different for iOS and Android. To start a Pod session on an iOS device, tap the tab **"Start"**.

On the Android device, we update the user interface to start sessions. To start a logging session on Android, you can choose from three options. You may:

**Configure + Activate** Now, here you can configure the Pod settings and start it immediately.

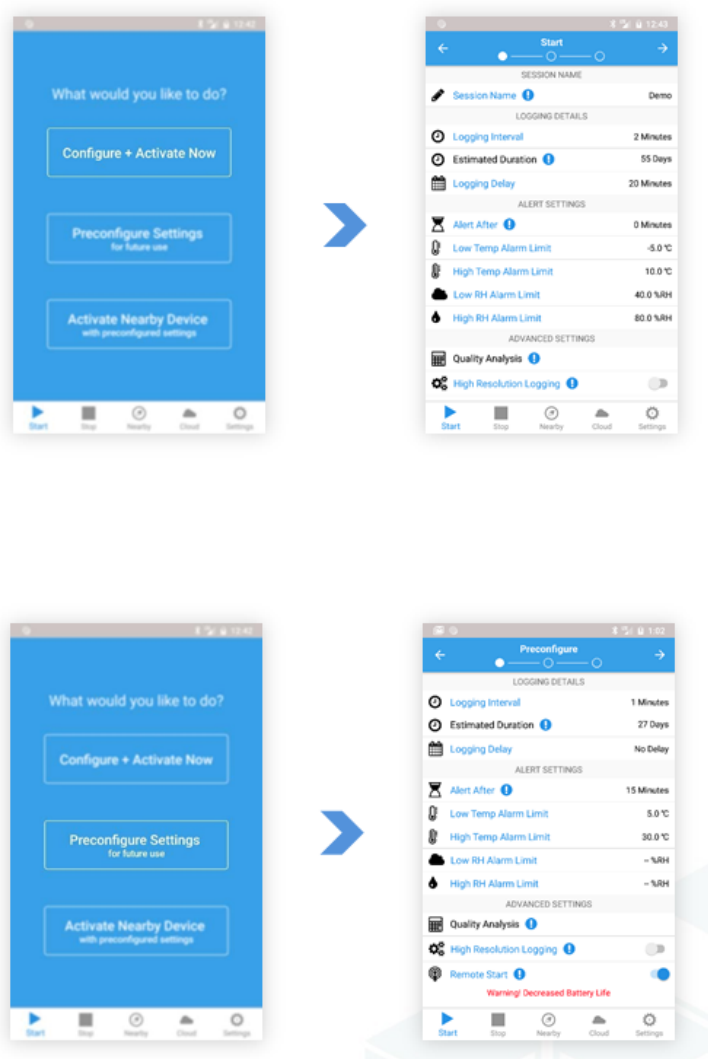
Go ahead to see demonstrative images.

## ACTIVATING A POD

# STARTING THE POD

**Preconfigure Settings** - settings for future use:

If you choose this option, you can save the settings in your logger to activate later by pressing and holding the multipurpose button on your Pod for 5 seconds. You can also put your Pod on standby, where it can be activated later, using the tab **Activate Nearby Device**. This feature is not yet available on iOS.

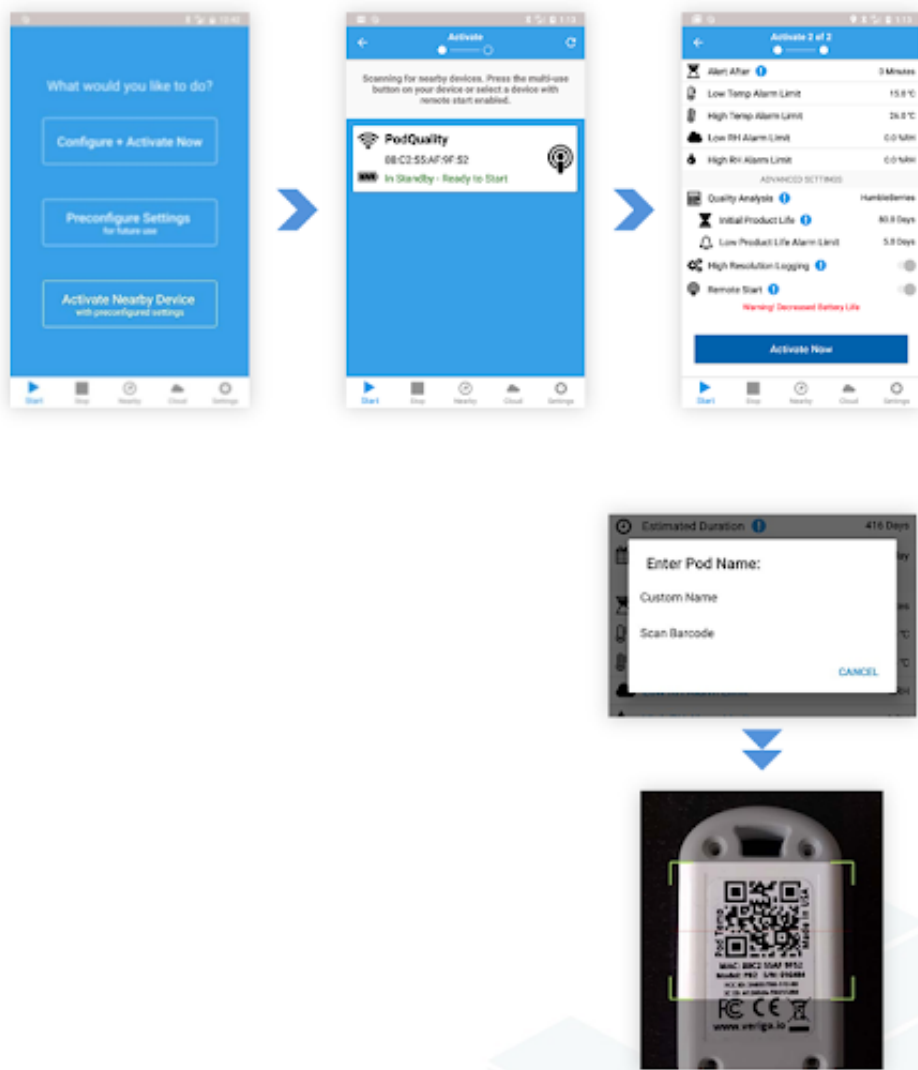


## ACTIVATING A POD

# STARTING THE POD

**Activate Nearby Device** (activate with the default settings):

Here you can see the configured settings and activate any inactive Pods nearby. You can activate the Pods configured for remote activation and / or simply press the multipurpose button on the Pod and select from the list to view the configured settings and activate it.



## ACTIVATING A POD

# CONFIGURING THE POD: SESSION NAME

Configure how the Pod will collect data and alert you to each session. To make changes, just tap the setting you want to customize and a numeric scroll or your phone's keyboard will be displayed. There are four fully customizable subcategories:

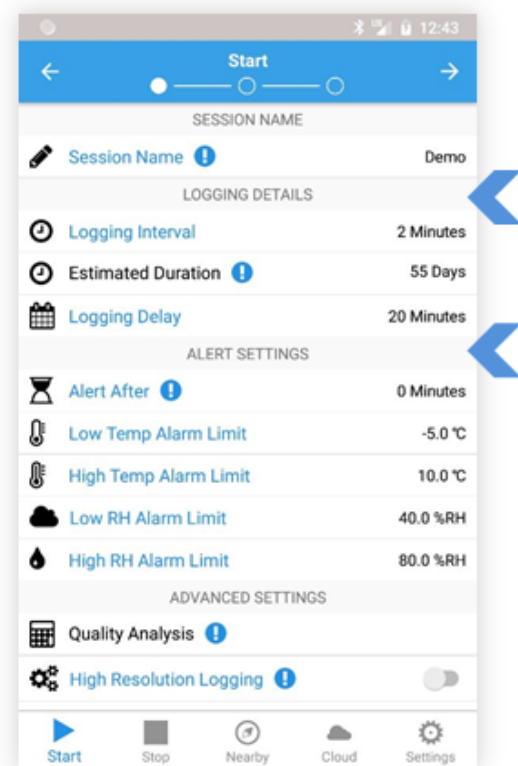
- Define a scan name or barcode to identify each individual Pod session
- **Custom Name** allows you to enter a name of your choice (maximum 20 characters)
- **Scan Barcode** Allows you to use your device's camera to identify any codebar and define it as identification.

## ATIVANDO UM POD

# RECORDING DETAILS

Set the recording parameters for your logging session. This is where you specify how often your Pod takes a sample of the current environment.

- **Log range:** allows you to define the time interval in which the Pod will write data
- **Estimated duration;** displays the amount of time before the data log becomes full (40,000 points).
- **Registration delay:** set a delay for recording data after starting the Pod. For example, the delay time required to load the product in a shipping container.
- **Press the button:** enable manual start by pressing the multipurpose button for five seconds. If the Press button is enabled, all settings will be pre-configured on the specified Pod to be activated later.



\* The Button Press option is only available on the iOS version of the application. On Android devices, you can configure to be enabled through the Pre-defined Settings for a guide for future use.



## ACTIVATING A POD

# ALERT SETTING

Set alert limits for your Pod. If the Pod detects conditions that exceed the current limits for a specified time, an alert message will be displayed with the connection to the cell **Pod Status** in the Pod and the [Nearby Pods](#) will be highlighted in red.

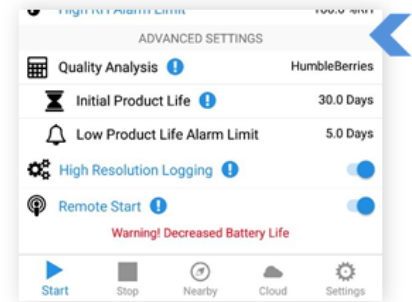
Alert configuration options include:

- **Alert After:** allows the user to define the cumulative time period in which a sensor reading must exceed a threshold before an alert is triggered. The acceptable cumulative time is defined independently for each limit.
- **Low and high temperature and humidity limits:** When exceeded, the Pod starts counting down to trigger an alert after the time designated by Alert Time.

## ACTIVATING A POD

# ADVANCED SETTINGS

**Quality Analysis** allows you to choose a standard or custom product life model that tracks the remaining life of your product. (for Pod Quality Only, if you want to know more about Pod Quality, visit [farmtoforkfresh.com](http://farmtoforkfresh.com))



**Initial Product Life** allows you to enter the remaining life of your product.

**Low Product Life Alarm** will alert you when your product falls below the remaining life value.

**High Resolution** allows more detailed recordings, when the temperature changes more than 0.5 degrees Celsius or the humidity changes more than 3%.

The option **Remote Start** is located on the default settings tab.

**Remote Start** activates remote boot puts your device on standby, which will allow you to start your Pod remotely with the app at a future time without physical access or touch the button on the device



## ACTIVATING A POD

# ADVANCED SETTINGS



**Warning:** High Resolution creates large files that may take longer to download. Use this option only if extremely accurate temperature or humidity records are required.



**NOTE:** While in standby mode, the device will consume battery life at the same rate as in active mode.

## ACTIVATING A POD

# SELECTING YOUR POD & CONFIRMING SETTINGS

### SELECTING YOUR POD

1. Press the multi-use button
2. Select the Inactive Pod.

### confirming settings and activating

This is the last step before starting a Pod. On this page, you can confirm that the information and parameters set are correct.

If you want to start the selected Pod, go to the bottom of the settings and tap the button **"Activate Now"** to program the profile you created.

After synchronizing with the Verigo server, you will receive a message stating that the Pod has been successfully started and synchronized. After synchronizing with the Verigo server, you will receive a message stating that the Pod has been successfully started and synchronized.



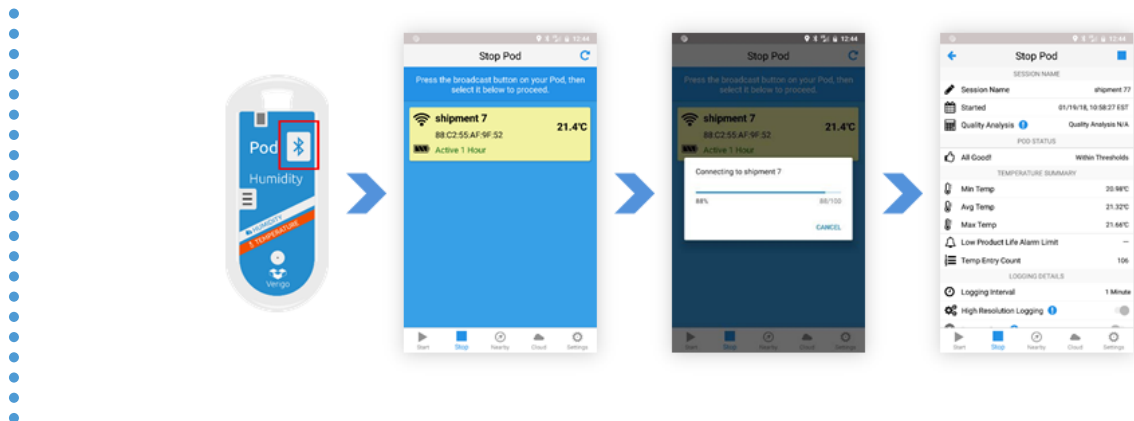
## STOP RECORDING

# STOP THE POD STOP LOGGING SESSION

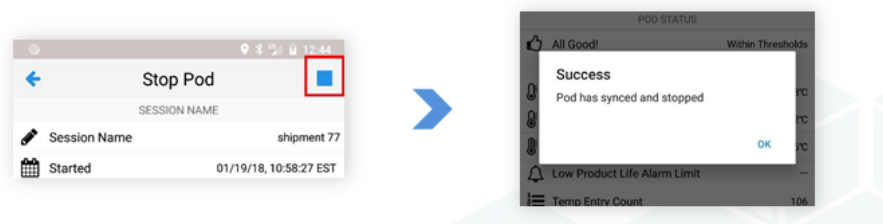
### STOP POD

To interrupt a Pod's current monitoring session and synchronize all data, select the menu option called Stop Pod.

Choose the Pod that you would like to stop recording the data by performing the following steps:



1. Press the Pod button
2. Select it from the list



## STOP RECORDING

# STOP THE POD STOP LOGGING SESSION

After selecting a highlighted Pod, the application will compile a summary of the readings and settings for the current session. This summary includes:

- Session name
- Start date
- Summary of temperature, humidity and product life (when applicable)
- Recording details
- Alarm settings
- Pod technical details

To interrupt the current session of your Pod, simply tap the Stop button. Your Pod will synchronize data with the Verigo cloud via your mobile device's Internet connection. Once the sync is complete, your Pod will no longer be active.

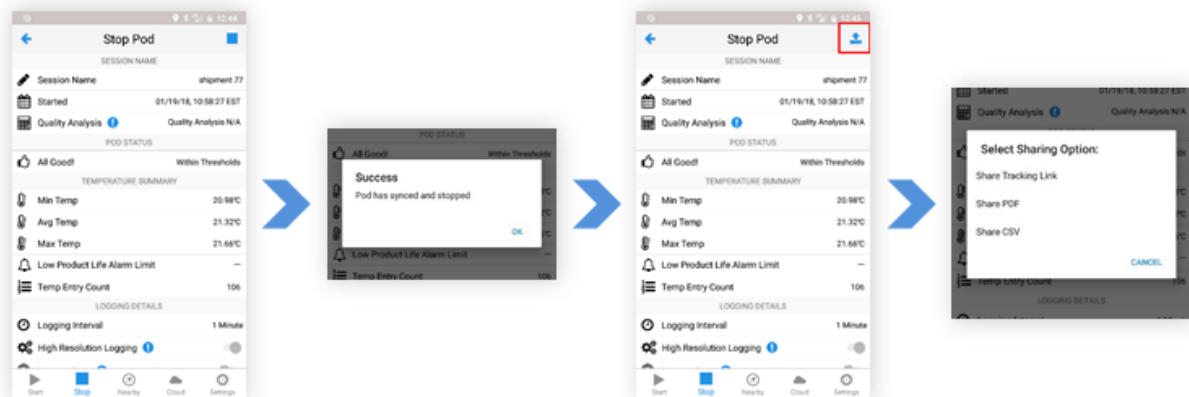
## STOP RECORDING

# STOP THE POD SHARING DATA

After stopping the Pod, you will have the option to share the collected data through Verigo's sharing function. The Share button is located in the upper right corner of your mobile device's screen.

This data can only be shared after the interruption of your Pod.

- **Share Tracking Link** sends a web URL of the recordings to a container;
- **Share PDF** to generate, download and send a compressed PDF of the monitored session;
- **Share CSV** to generate, download and send a Microsoft Excel® file.



- Press the button **"Stop"**
- Wait for synchronization
- The **"Share"** button will appear
- select an option
- You can also share your information on the Pod Status tab.

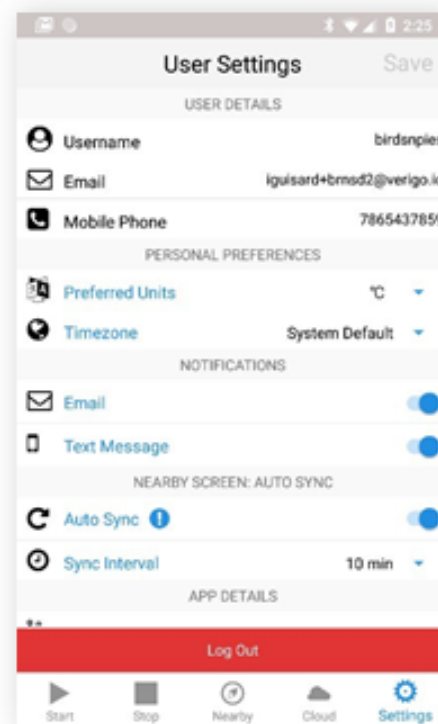
Go to for more information.

## USER CONFIGURATION

# USERS

Users can modify their account settings on the tab **Settings**. There are five subcategories under “User Settings”, including:

- User Details: show username, email and registered phone number. They cannot be changed by the application.
- Personal Preferences: selector switch for Celsius and Fahrenheit temperature units to be displayed and time zone setting according to the user's preference
- Notifications: sets notification preferences.
- Nearby Screen Auto Sync: enable or disable pings on your mobile phone
- App Details: app version





## USER CONFIGURATION

# AUTOMATIC SYNCHRONIZATION

When automatic synchronization is active, the application collects small bits of data from the devices around it. A "Ping" is collected from all nearby Pods and sent to the cloud based on the selected sync interval, allowing you to automatically receive alerts as they are detected.

The application will only collect "Pings" from neighboring devices when it is opened on your mobile device. Ping will not be collected while the application is in the background.

To activate the **Auto Sync** on your mobile device:

1. Go to Settings
2. Activate Auto Sync.
3. Select
4. Make sure to save the changes made.

All "Pings" will be plotted on graph E and displayed in your session's event log.

Make sure you have email and / or text message alerts enabled to receive notifications.

This will allow you to receive alerts about your session in real time.

## SAVE SETTINGS

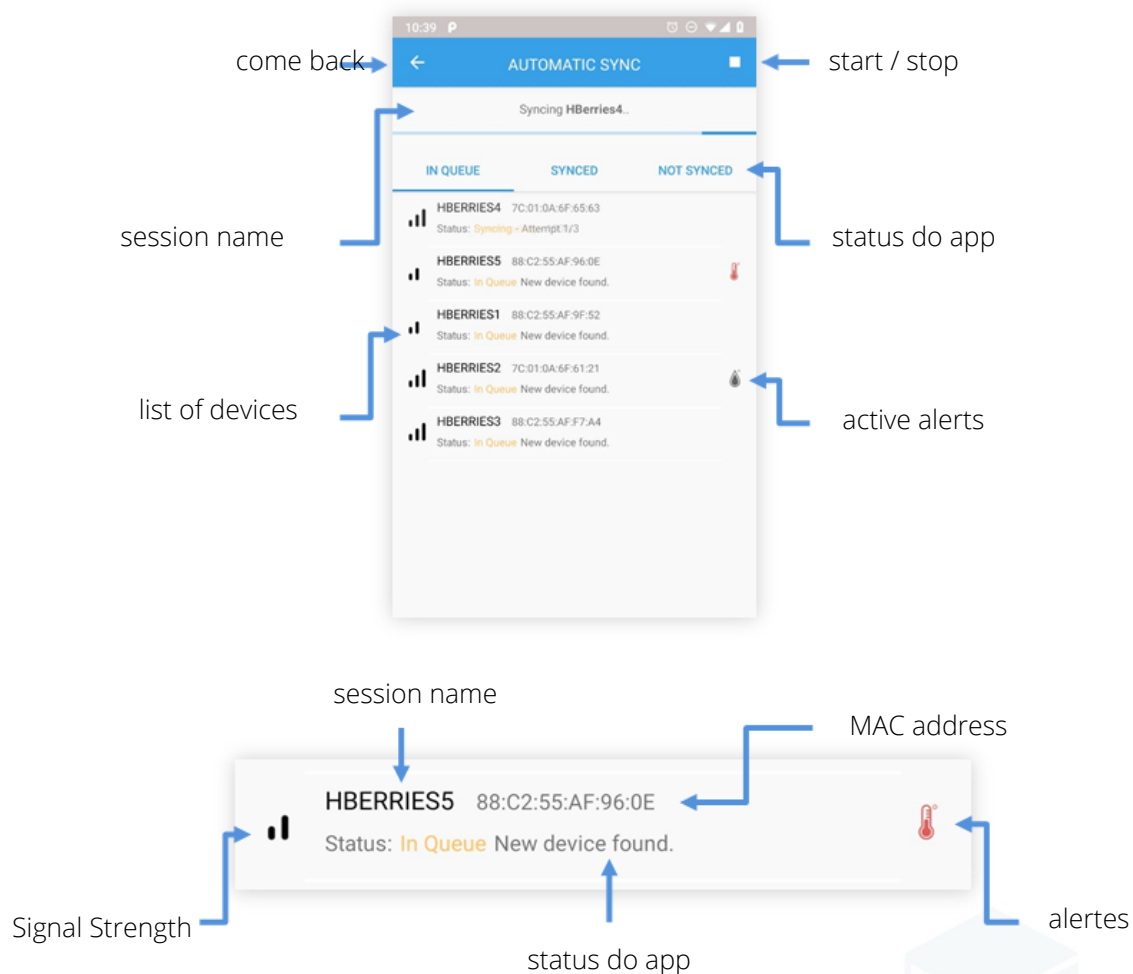
In order for your preferences to be saved, you must tap the "Save" button located in the upper right corner of the window. You will receive a notification when your settings are successfully saved.

## USER CONFIGURATION

# AUTOMATIC MODE

On Android \* version 1.10 and higher, you can start, sync and stop your Pods automatically. The application will search for nearby devices to connect and perform the desired function.

Look for the automatic mode symbol on the tab **Start, Nearby, e Stop.**

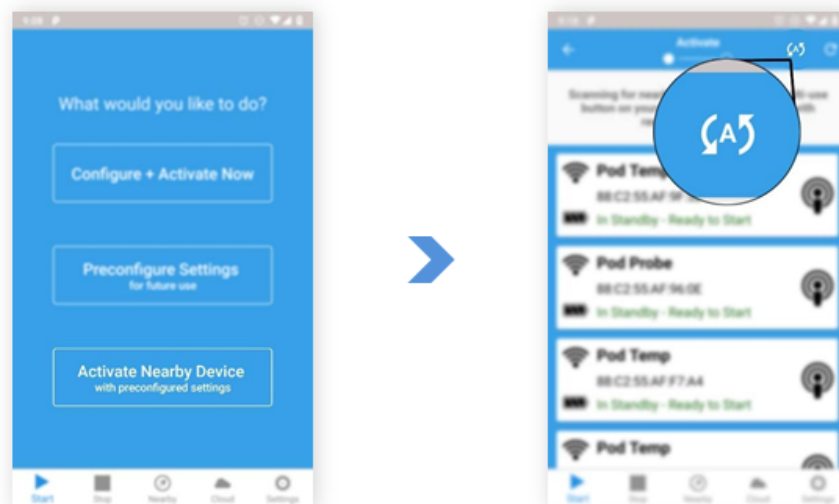


\*Automatic mode unavailable on iOS.

## USER CONFIGURATION

# AUTOMATIC START AUTOMATIC START

You can find it in the Activate Nearby Device tab. This feature will only work for devices that have been configured with Remote Start. See page 14 for more information on how to configure your devices for Remote Start.



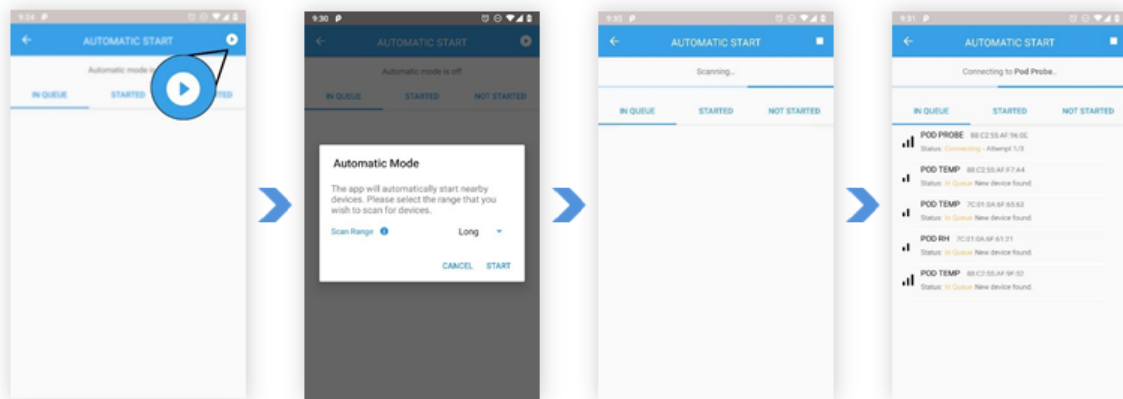
- Automatic Start is in **Activate Nearby Device**
- Automatic mode is on the tab **Start, Nearby, e Stop**

## USER CONFIGURATION

# AUTOMATIC START AUTOMATIC START

To automatically start a batch of pods, make sure that they are all inactive and have been previously configured for remote booting.

1. Go to Automatic Start.
2. Press Start
3. Choose a scan interval and the application will search for devices. Shortest is 0-2ft (0.6 meters). The longest is the maximum possible range.
4. Press the Start button. The app will start searching for Pods nearby. If a Pod is found and meets the requirements, the application will place the Pod in the "In Queue" list to start.



**Problems solution:** If the Pod is not found, check that it is really inactive and configured for Remote Start.

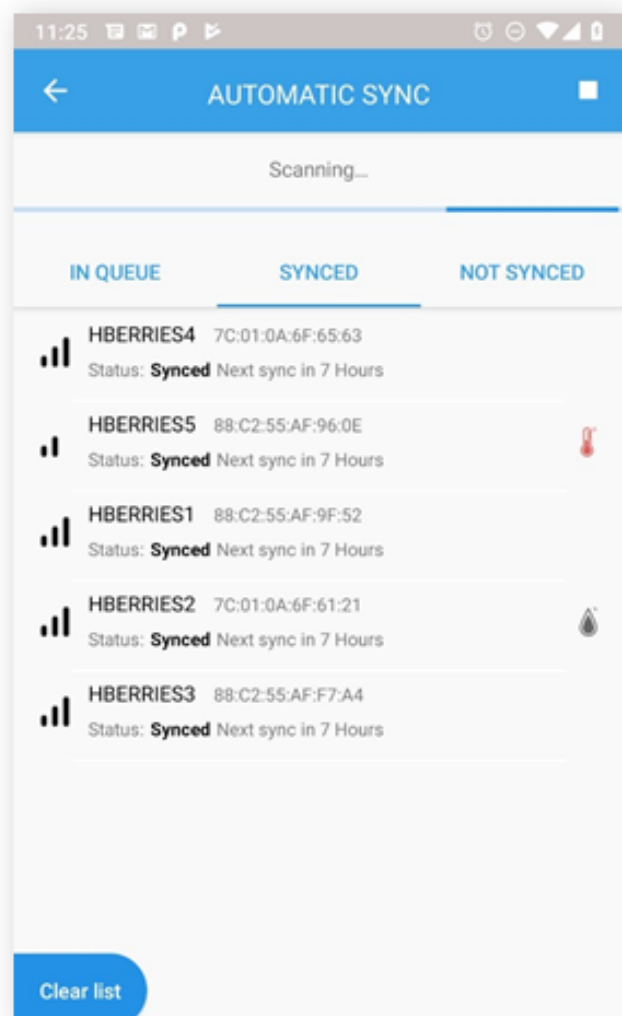
## USER CONFIGURATION

# AUTOMATIC SYNCHRONIZATION

## AUTOMATIC SYNC

You can use the application as a gateway device to automatically synchronize your sessions with the Verigo cloud. The resource **Automatic Sync** is located on the tab **Nearby**. To automatically sync your Pods to the cloud, follow the instructions below.

1. Go to the Automatic Sync tab
2. Press Start
3. Enter the information of your choice
4. Press the "Start" button. The app will scan the active Pods



## USER CONFIGURATION

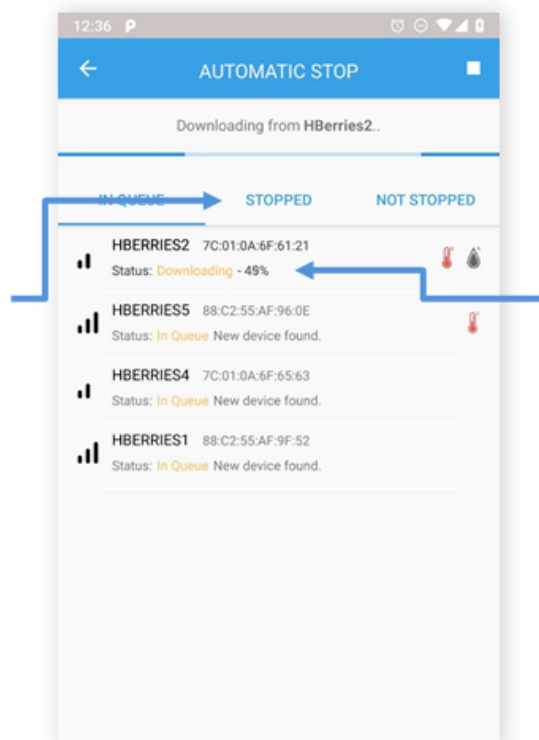
# AUTOMATIC INTERRUPTION AUTOMATIC STOP

Similar to automatic start and sync, you can also configure the app to automatically stop your sessions through the window **Automatic Stop** found on the tab **Stop**.

Follow these steps to automatically stop your sessions:

1. Go to the Automatic Stop tab.
2. Press Start
3. Configure according to your preference
4. Press "Start". The app will start to scan and try to stop active sessions

the Stopped session shows the ones that were interrupted



**Download progress. Extensive recordings can take a while to complete**

## VERIGO'S CLOUD

# USING THE VERIGO CLOUD SEARCH

The cloud is where your sessions are stored. To access the Verigo cloud, simply touch the tab **"Cloud"** or you can open a link in your preferred browser to **cloud.verigo.io**. Upon entering, you are directed to the search page, where there are several tools to help you find and access a Pod session that has been synchronized with Verigo servers.

use the search bar in the upper left corner of the screen to find a Pod:

1. The name and MAC address of the session
2. The start and end date defines the upper and lower limits for searching for the most recent synchronization event.

You can also filter your searches by the following categories:

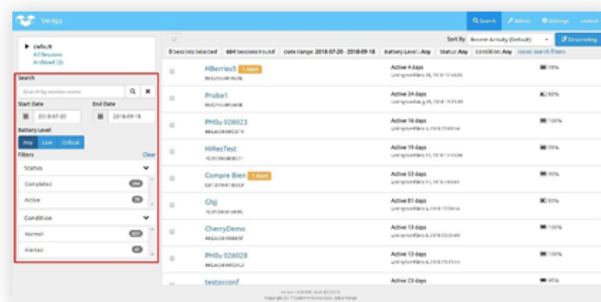
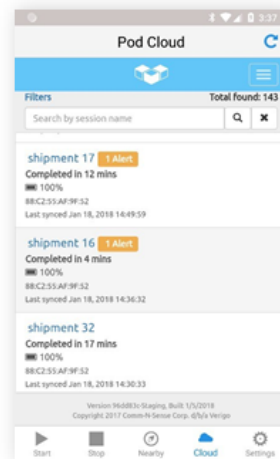
- Battery level (low is 30% and below, critical is 15% and below)
- Status (Full, Active)
- Condition (Normal, Alert)

Classify sessions using the classification tool located above the list of sessions by most recent, last synchronized activity, session name, active time and most recent temperature reading. Clicking the down and up button changes the order of the list accordingly. You can manually scroll through the list to find a particular Pod. This list is organized by the most recent date when there was a synchronization with the server.

The search function and the filter are located in the upper left corner of the screen.

## VERIGO'S CLOUD

# USING THE VERIGO CLOUD SEARCH





## VERIGO'S CLOUD

# ACCESSING POD DATA

By selecting a Pod on the search screen, you are accessing the data stored in the cloud. Here you can see the sensor and the event history.

The Pod profile shows a basic overview of the session, which includes:

- Pod type (eg Temperature, Humidity, Probe ...)
- Session Name
- Start date
- Stop date
- Alerts (if any)



Session Details		
DEVICE	SETTINGS	TIMES
Session Name shipment 2	Logging Interval 1 min	Last Synced Time Jan 19, 2018 12:47:14
Device ID (MAC) F4:B8:5E:F2:4E:0A	High Resolution Logging Disabled	Activation Time Jan 18, 2018 14:14:54
Firmware Version 1.9.29	Raise Alert After 1 min	Logging Start Time Jan 18, 2018 14:15:53
Calibration Date -----	Start Logging After 1 min	Logging Stop Time Jan 19, 2018 12:46:55
Humidity Coefficients [40, 254, 77, 215, 29, 23]	Activation Method Mobile App	Deactivation Time Jan 19, 2018 12:47:14
Temperature Coefficients [112, 0, 3, 4]		
Battery Level 100%		

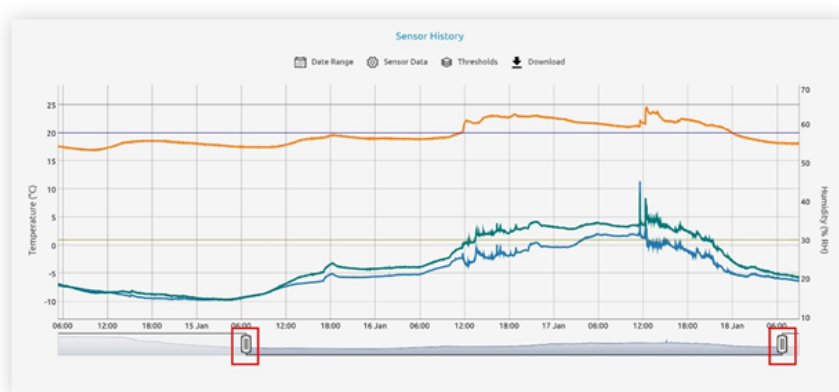
If you want to see a more detailed description about the Pod and its parameters, click **"More Details"**.

This shows a detailed description and the parameters defined for this registration session.

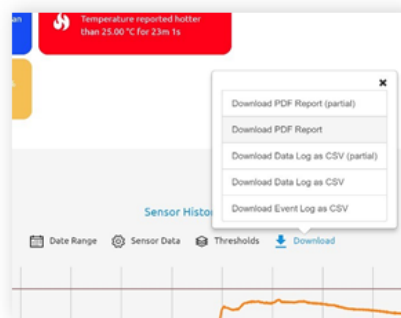
## VERIGO'S CLOUD

# SENSORING HISTORY

The Pod sensor history displays a graph plotted with the recorded data for temperature, humidity and product life (if available) on the Y axis and date and time on the X axis.



Você pode interagir com as barras deslizantes abaixo do gráfico para aumentar ou diminuir o zoom e analisar os dados com mais precisão. Acima do gráfico, você encontrará algumas ferramentas úteis para ajudá-lo a analisar os dados da sessão:



- **Date Range;** allows you to choose a specific point in time and cut the graph according to your time selection.

**Sensor Data:** allows to activate and deactivate plotted sensors and ping values in real time on the graph.

## VERIGO'S CLOUD

# SENSORING HISTORY

- **Thresholds:** enables and disables limits for temperature, humidity and product life readings.
- **\*Download:** here you can download a full PDF report, CSV (Excel), event history or partial report based on your period selection.

\*PDFs can take up to 90 seconds to complete the download.

Below the graph, there is a general summary of the sensor data for this session, which includes:

- Alarm limits
- Minimum, average and maximum value recorded
- Total number of data
- MKT (Mean Kinetic Temperature), mean kinetic temperature

## VERIGO'S CLOUD


# HISTORY OF EVENTS

The event history compiles a map that shows where people accessed a Pod based on their GPS data. The event history also records the date and time, type of action and the identity of the user who interacted with the Pod.

TEMPERATURE		High alarm limit	Min Value	Avg Value	Max Value	MKT	Total data points
Low alarm limit	20.00 °C	25.00 °C	16.91 °C	19.74 °C	24.52 °C	20.13 °C	8277
HUMIDITY		High alarm limit	Min Value	Avg Value	Max Value		Total data points
Low alarm limit	30.00 % RH	65.00 % RH	14.47 % RH	21.75 % RH	45.14 % RH		8277

The complete list of events is organized chronologically. Events can be searched by users and actions taken. The map is interactable, being able to zoom in and out and navigate around it freely

Filter events by user or type		
Full Sync by Siribongles	Jan 18, 2019 12:12:15	19.82 °C, 19.89 % RH
Ping by Siribongles	Jan 17, 2019 18:14:53	22.1 °C, 29.3 % RH
Full Sync by Siribongles	Jan 17, 2019 13:09:27	22.04 °C, 29.44 % RH
Ping by Siribongles	Jan 17, 2019 13:08:51	22.0 °C, 29.1 % RH
Ping by Siribongles	Jan 17, 2019 13:02:06	22.1 °C, 29.2 % RH
Ping by Siribongles	Jan 17, 2019 14:22:14	22.3 °C, 28.5 % RH
Ping by Siribongles	Jan 17, 2019 13:59:13	23.0 °C, 28.4 % RH
Full Sync by Siribongles		21.55 °C, 29.84 % RH

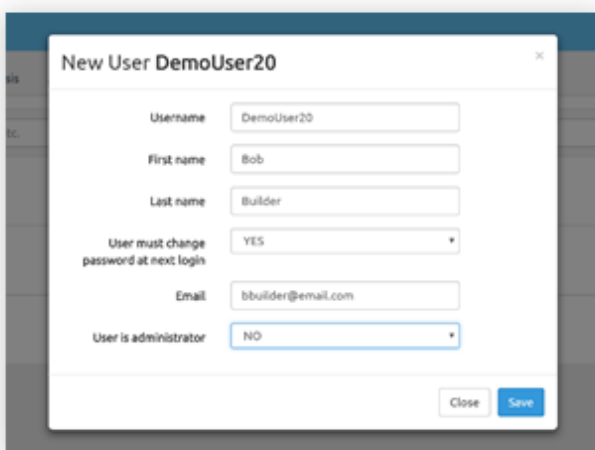


# ADMINISTRATOR

On the Verigo cloud tab, managing user accounts is simple. The administrator's home page allows you to search for users with filters by name, email and assigned roles.

As an administrator, you can:

- Add a new user by selecting the link.
- Fill in the credentials to create a user and select Save to add the new account.
- Delete users by clicking the Delete button after selecting a user.
- Edit the user's role by selecting that user's name. This will open the account profile you created earlier.
- Deactivate users by opening the profile and clicking on "Deactivate".
- Require password changes.



The screenshot shows a modal window titled "New User DemoUser20". It contains the following fields and values:

Field	Value
Username	DemoUser20
First name	Bob
Last name	Builder
User must change password at next login	YES
Email	bbuilder@email.com
User is administrator	NO

Buttons: Close, Save

As an administrator you can add and remove users

## VERIGO'S CLOUD

# CREATING AND EDITING PRODUCT LIFE PROFILES

To create or edit your own product life profiles, click on the Admin tab in the top right corner of the Verigo cloud. Two tabs will appear in the upper left corner, "Users" and "Quality Analysis". Click on the Quality Analysis tab to create or edit your profiles

- If you want to create a profile, just click on the "Create a new profile" button. If you want to edit a profile, click on "View" and "Modify Profile".
- A section will appear that allows you to create / update a profile name and description. When you're done, click Continue.
- A new section will appear, allowing you to enter the ideal temperature for your product, as well as the number of days the product will last at that temperature.
- A new section will appear, allowing you to add more data points at different temperatures to increase the accuracy of your model. To add more than one point, click on the "Add more points" button.
- After a point is added, it will be instantly displayed in the graph on the right. To remove data points, click on the red X next to the corresponding data line. A new section will appear, allowing you to save or delete your profile. Once saved, you can now access and choose to use your new profile when configuring a Pod Quality.

# SETTINGS

Users can make changes to their profiles and preferences on the Verigo Cloud Settings tab. There are three subcategories under Fully Customizable Settings:

- **Account:** edit name, contact email and telephone number to receive alerts;
- **Notification:** enable or disable alerts via email or SMS;
- **Preferences:** change temperature unit (° C or ° F), time zone and language.

The screenshot shows the Verigo Cloud Settings interface. At the top, there is a navigation bar with 'Verigo' logo, a search icon, and links for 'Admin', 'Settings', and 'birdspies'. Below the navigation bar, there are three tabs: 'Account', 'Notifications', and 'Preferences'. The 'Account' tab is active, and it is divided into two sections: 'Profile' and 'Contact'. The 'Profile' section contains fields for 'Username' (birdspies), 'Password' (with a 'Change' link), 'First name' (Ian), and 'Last name' (Gulsard). The 'Contact' section contains fields for 'Email' (lgulsard@verigo.io), 'Mobile number' (123-345-7890), and 'Country Dialing Code' (United States (+1)). A red box highlights the 'Save' button at the bottom right of the form.

Make sure to save your changes before leaving the screen.

## PC TOOL

# SYSTEM REQUIREMENTS

The **Verigo PC Tool** is a PC software tool designed for computers running Windows 7 and later, with Internet access and which have the specified USB BLE dongle, available from Verigo.

This tool is designed to allow Verigo distributors, partners and customers to quickly and easily configure or reconfigure the settings and options for a large number of inactive Verigo devices before they are used in a monitoring application.

To use the PC, you must meet the minimum system requirements:



- Core i3 2.4 Ghz
- 4 GByte RAM USB Type A Port
- Windows 7/8/10 32 Ou 64-bit

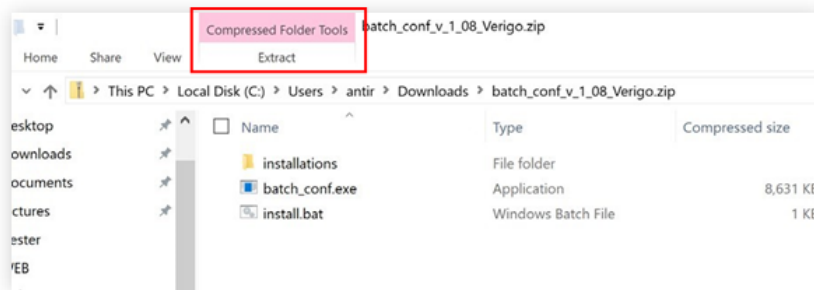


## PC TOOL

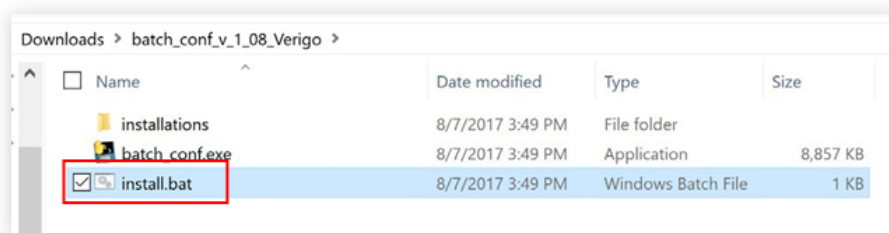
## INSTALLATION

To install the configuration tool, follow the steps below:

1. Download the ZIP file



2. Extract the files - **"Extract"** is at the top of the screen



3; Run the file "install.bat"

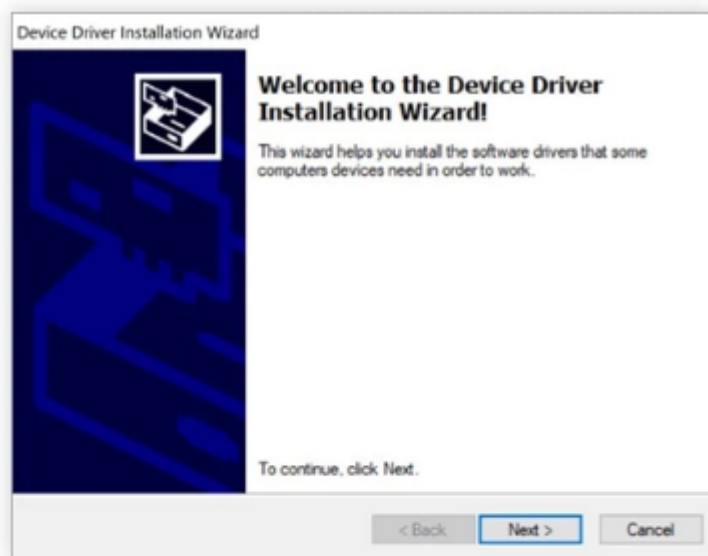
A) Later versions of the Windows operating system issue warning messages, waive and allow these steps to proceed.

B) We recommend that you temporarily disable your antivirus program before installing the driver, as some programs trigger a false alarm.

## PC TOOL

## INSTALLATION

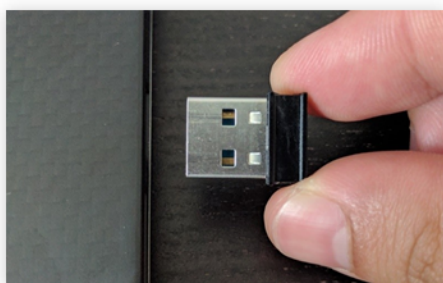
4. Follow the instructions on the screen to install the necessary driver.



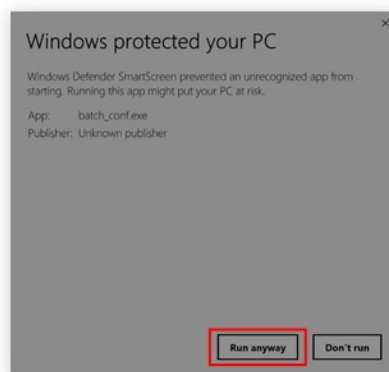
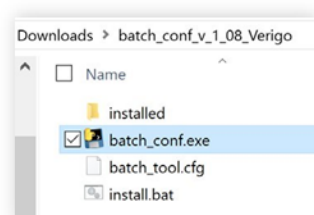
## PC TOOL

PREREQUISITES &  
FIRST RECORDING

Before you begin, make sure that the Bluetooth USB dongle is connected to the computer. If you need an extra USB dongle, contact your Verigo representative.



- Double Click em "batch\_conf.exe"
- Click em "Run anyway" para prosseguir



After a successful installation, return to the original folder you created and double-click "**batch\_conf.exe**". If you are using Windows 8 or 10, you will receive a warning the first time you open this tool, choose to allow the program to open.

## CONFIGURING THE DEVICE

# LOGIN & CONFIGURATION

The first screen you see is the login screen. You can use the same account credentials to log on to your company. If you don't have an account, go to **[www.cloud.verigo.io](http://www.cloud.verigo.io)** to create an account.

If you want an existing account to be set up for use with the configuration tool, send an email with this request and your username to [support@verigo.io](mailto:support@verigo.io).

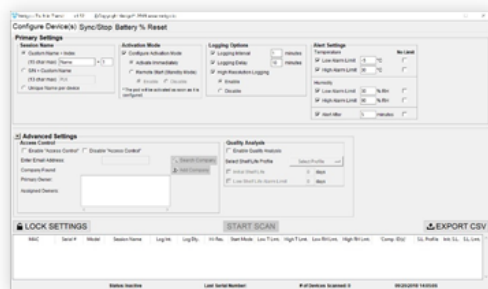
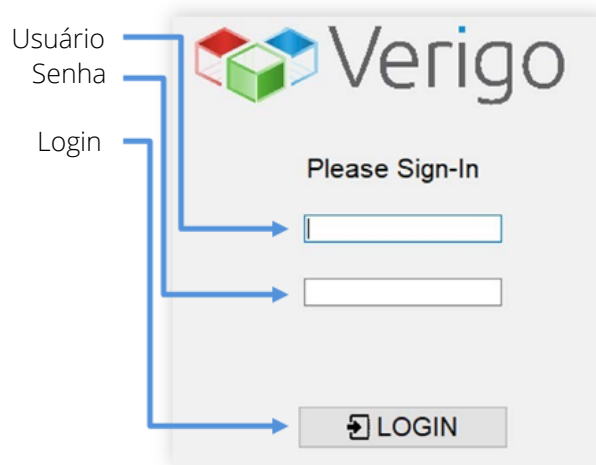
### CONFIGURING THE POD

Enter the desired settings in the options listed in the panels "**Primary Settings**" and "**Advanced Settings**". If a specific setting is not selected using the checkbox to the left of that setting, the tool will not edit the value of that setting when programming the device.

See images on the next page.

## CONFIGURING THE DEVICE

## LOGIN &amp; CONFIGURATION

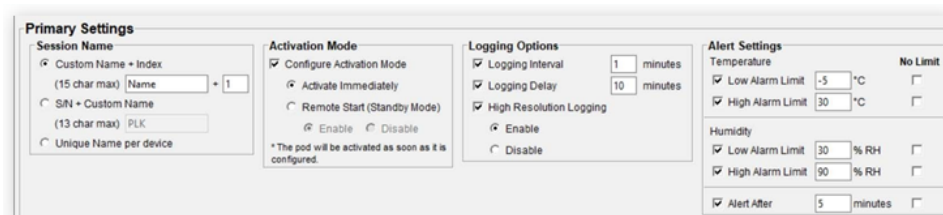


← Primary Settings

← Advanced Settings

## CONFIGURING THE DEVICE

## LOGIN &amp; CONFIGURATION



**Primary Settings**

**Session Name**

Custom Name + Index  
(15 char max) Name  +   
 SN + Custom Name  
(13 char max) PLK   
 Unique Name per device

**Activation Mode**

Configure Activation Mode  
 Activate Immediately  
 Remote Start (Standby Mode)  
 Enable  Disable  
\* The pod will be activated as soon as it is configured.

**Logging Options**

Logging Interval  minutes  
 Logging Delay  minutes  
 High Resolution Logging  
 Enable  Disable

**Alert Settings**

Temperature **No Limit**

Low Alarm Limit  °C   
 High Alarm Limit  °C

Humidity

Low Alarm Limit  % RH   
 High Alarm Limit  % RH   
 Alert After  minutes



Nomeação



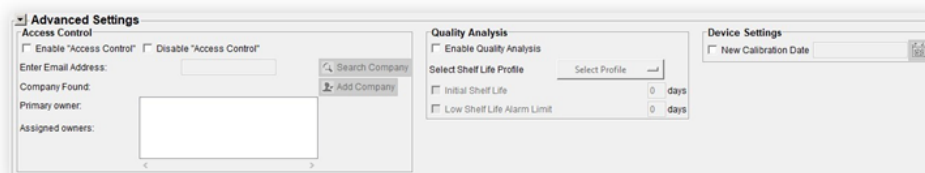
Modo de Ativação



Gravação



Alertas



**Advanced Settings**

**Access Control**

Enable "Access Control"  Disable "Access Control"

Enter Email Address:

Company Found:

Primary owner:

Assigned owners:

**Quality Analysis**

Enable Quality Analysis

Select Shelf Life Profile

Initial Shelf Life  days  
 Low Shelf Life Alarm Limit  days

**Device Settings**

New Calibration Date



Controle de Acesso



Análise de Qualidade



Config. dispositivo

## CONFIGURING THE DEVICE

# PRIMARY SETTINGS

In the primary settings section, you will find the most basic settings for your registration session, as well as the activation method. These settings will be used to configure and activate your Pod lot.

- **Session name:** allows you to enter a custom name for each session or pattern for all devices.
- **Activation Mod:** defines how the session starts (immediately, button and / or remotely).
- **Logging Options:** defines when and how often the device records data.
- **Alert Settings:** defines a minimum and maximum temperature and humidity limit for your configuration.

## CONFIGURING THE DEVICE

# ADVANCED SETTINGS

Advanced settings allow you to configure access control, define quality analysis and other settings that are not available in the application.

- **Access Control:** allows you to control access to the block of unidentified companies and grant access to specific companies on your device.
- **Quality Analysis:** loads an expiration profile in the registration session. This feature is only available to users with Pod Quality.
- **Device Settings:** This section is only available to authorized users.



## CONFIGURING THE DEVICE

# SCANNING NEAR PODS

After entering the desired settings and confirming that they are correct for the devices, click the button **"Lock Settings"**. The button **"Start Scan"** will be available only after you lock the current settings. If you want to modify your settings, click the button **"Unlock Settings"**.

To start configuring the devices, click **"Start Scan"**.

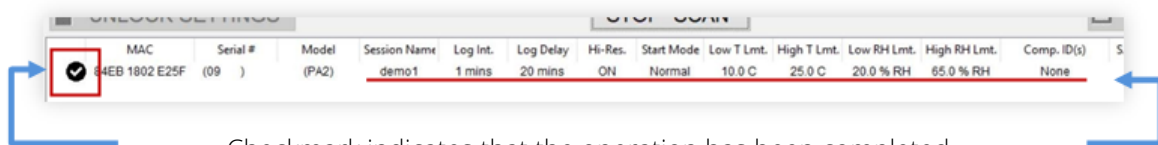
Bring the inactive device (s) to be configured within 1 meter of the USB BLE dongle and briefly tap the button on the first device you want to configure.



## CONFIGURING THE DEVICE

# SCANNING NEAR PODS

After the button is pressed, you will hear two beeps from the device while the tool connects and configures the Pod. Within 3 to 10 seconds, the setup is complete and an entry will appear in the table showing the details of the device and its configuration, with a "check mark" symbol to the left of the table entry indicating "Success".



MAC	Serial #	Model	Session Name	Log Int.	Log Delay	Hi-Res.	Start Mode	Low T Lmt.	High T Lmt.	Low RH Lmt.	High RH Lmt.	Comp. ID(s)	S
84EB 1802 E25F	(09 )	(PA2)	demo1	1 mins	20 mins	ON	Normal	10.0 C	25.0 C	20.0 % RH	65.0 % RH	None	

Checkmark indicates that the operation has been completed.

The table entry shows the settings that have been configured in the Pod.

While the scanner is active, you can configure several Pods by following the step above.

**Note:** keep the device at five feet from the tool for the entire time it is being set up.

The tool will not configure devices that are in the active monitoring state. You must stop any current monitoring session using the Verigo application before attempting to configure using the Windows batch configuration tool.

If the tool encounters an error when trying to configure a specific device, a pop-up dialog box will be displayed with details and the entry in the table will show a "warning" symbol to the left of the corresponding table entry

## CONFIGURING THE DEVICE

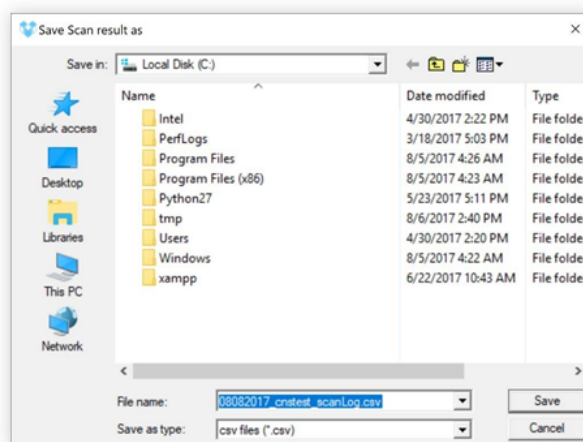
# EXPORTED DATA

If desired, you can save a "CSV" log containing records of all scanned devices.

click in **"Stop Scan"** and select the option **"Export CSV"**.

1. When all devices are configured click **"STOP SCAN"**.
2. Click on the option **"Export CSV"**
3. Choose folder to save
4. click in **"Save"**

UNLOCK SETTINGS				STOP SCAN				EXPORT CSV							
MAC	Serial #	Model	Session Name	Log Int.	Log Delay	Hi-Res.	Start Mode	Low T Lmt.	High T Lmt.	Low RH Lmt.	High RH Lmt.	Comp. ID(s)	S.L. Profile	Int.S.L.	S.L. Lmt.
84EB 1802 E25F (09 )	(PA2)	(PA2)	demo3	1 mins	5 mins	ON	Normal	-10.0 C	25.0 C	20.0 % RH	55.0 % RH	None			
F4B8 5E72 4E77 ( )	(PA2)	(PA2)	demo2	1 mins	5 mins	ON	Normal	-10.0 C	25.0 C	20.0 % RH	55.0 % RH	None			
89C2 55AF 900E (011429 )	(PE0)	(PE0)	demo1	1 mins	5 mins	ON	Normal	-10.0 C	25.0 C			None			



## SYNCHRONIZATION AND INTERRUPTION - OVERVIEW

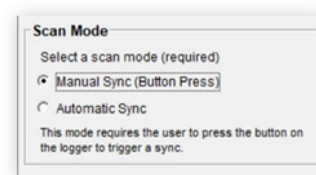
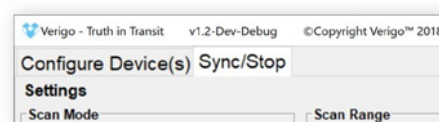
# SCAN MODE

The PC Tool can be used as a gateway to automatically synchronize and interrupt sessions. To access this feature, just select the Sync / Stop option, located on the top navigation bar of the tool.

### SCAN MODE

The scanning mode is found in the settings option on the Sync / Stop tab. You can choose when and how registrars will be checked. There are two different modes: **Synchronization Manual** (standard configuration) and **Automatic synchronization.o**.

**Manual Sync:** When this mode is selected, you must press the button on the logger to trigger a synchronization.



**Automatic Sync:** All loggers in the range will be synchronized.



## SYNCHRONIZATION AND INTERRUPTION

# SCAN SCOPE

### SCAN MODE

The scan range allows you to set the distance to how far you want the tool to scan. This is especially useful in operations where you want to limit the number of Pods to be scanned.

You can choose between two ranges, short and long range \*. The short range is less than 1 meter. Long range is the maximum possible range that the sensor can detect.

\* It is worth remembering that any obstacles can drastically affect the reach of the tool.



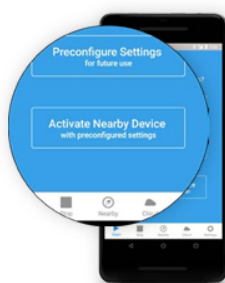
**Scan Range**  
Select a range to scan

- Short (<1 meter)
- Long (max range)

**Stop Options**

- Stop after successful sync
- Configure Standby Mode
- Disable Standby Mode (default)
- Enable Standby mode

\* Enable 'Stop after sync' to end the active session after a successful sync.



## SYNCHRONIZATION AND INTERRUPTION

# INTERRUPT OPTIONS

In addition to the ability to synchronize, you can also configure the tool to interrupt and end the session after synchronizing data with the cloud.

Select **"Stop after successful sync"**, and then the tool stops the logger after a successful synchronization. Sessions that are not successfully synchronized will not be interrupted.

In the section **"Stop Options"**, you choose the remote activation feature. Activating the **"Standby Mode"** puts your logger on standby, which will allow you to start remotely with the app in the near future, without having to physically access or touch the button. The logger can be activated at any time using the tab **"Activate Nearby Device"** \*.

Select **"Activate Nearby Device"** on Android to activate inactive loggers. \* The tab

"Activate Now" is only available on the Android version for now.

## SYNCHRONIZATION AND INTERRUPTION

# SCANNING NEXT LOGGERS

The Sync / Stop feature acts similar to the tool's Configure device (s) tab. First, you must define the desired settings (Scan Mode, Range and Stop Options). Then you must lock your settings. After clicking the button **"Lock Settings"**, you can start the scan by selecting the button **"Start Scan"**.

1. First choose the scan mode and interrupt options
2. Lock the settings in "Lock Settings"
3. Click "Start Scan" to start
4. The list is populated with the loggers found

Synched	Stopped	Serial #	Model	MAC	Session Name	Start Date	Stop Date	Start Method	Alert Status	Low Temp	High Temp
False	False	None	None	7C21346F8121	Waka	None	None	None	None	None	None

Synched	Stopped	Serial #	Model	MAC	Session Name	Start Date	Stop Date	Start Method	Alert Status	Low Temp	High Temp
True	True	85771	PA2	7C21346F8121	Waka	2018-06-13 21:13:12+00:00	2018-06-13 21:13:28-087000	ButtonPress	No Alerts	27.87	27.87

After a session is synchronized, the list entry is updated with the session information.

Sales engineering:

Tel: +55 11 5562 0337 | [info@maxitrack.com.br](mailto:info@maxitrack.com.br) | [www.maxitrack.com.br](http://www.maxitrack.com.br)



Quality ISO 9001  
Certified System



For reasons of improving the technology used in the manufacture of our product line, this manual may change without prior notice.